

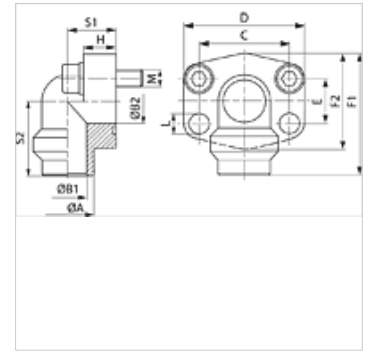
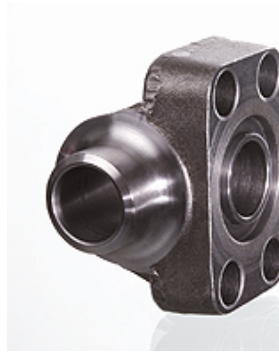
AFS 90 SRE (3000 PSI)

SAE welded on flange, angle 90°

HANSA FLEX

Properties

Pressure series	3000 psi
Standard	SAE J 518 C ISO 6162
Construction	Angle 90°
Design	SAE welded on flange
Mounting	Screw bore hole
Scope of supply	flange only
Material	S355J2G3 (ST52.3)
Surface	black oiled



Note

The stated maximum working pressure relates to the flange. The actual working pressure is determined by the pipe (wall thickness) and the quality of the pipe.

Item

Identification	PB 10.9 (bar)	Size	Pipe	A (mm)	B1 (mm)	B2 (mm)	C (mm)	E (mm)	F1 (mm)	S1 (mm)	S2 (mm)	L (mm)
AFS 80/90 SRE 20	250	1/2"	20 x 3	20	14	13	38,1	17,5	60	20	37	9,0
AFS 80/90 SRE 22	160	1/2"	22 x 2	22	18	13	38,1	17,5	60	20	37	9,0
AFS 80/90 SRE 25	250	1/2"	25 x 3	25	19	13	38,1	17,5	60	20	37	9,0
AFS 80/90 SRE 28	160	1/2"	28 x 3	28	22	13	38,1	17,5	60	20	37	9,0
AFS 100/90 SRE 25	250	3/4"	25 x 3	25	19	19	47,6	22,3	63	24	38	11,0
AFS 100/90 SRE 28	160	3/4"	28 x 3	28	22	19	47,6	22,3	63	24	38	11,0
AFS 100/90 SRE 30	250	3/4"	30 x 4	30	22	19	47,6	22,3	63	24	38	11,0
AFS 100/90 SRE 35	160	3/4"	35 x 4	35	27	19	47,6	22,3	63	24	38	11,0
AFS 102/90 SRE 30	250	1"	30 x 4	30	22	25	52,4	26,2	70	28	43	11,0
AFS 102/90 SRE 35	160	1"	35 x 4	35	27	25	52,4	26,2	70	28	43	11,0
AFS 102/90 SRE 38	250	1"	38 x 4	38	30	25	52,4	26,2	70	28	43	11,0
AFS 102/90 SRE 42	160	1"	42 x 3	42	36	25	52,4	26,2	70	28	43	11,0
AFS 104/90 SRE 38	250	1.1/4"	38 x 4	38	30	32	58,7	30,2	85	34	51	11,5
AFS 104/90 SRE 42	160	1.1/4"	42 x 3	42	36	32	58,7	30,2	85	34	51	11,5
AFS 104/90 SRE 48	160	1.1/4"	48.3 x 4.5	49	39	32	58,7	30,2	85	34	51	11,5
AFS 106/90 SRE 38	210	1.1/2"	38 x 4	38	30	38	69,9	35,7	95	38	56	13,5
AFS 106/90 SRE 42	160	1.1/2"	42 x 3	42	36	38	69,9	35,7	95	38	56	13,5
AFS 106/90 SRE 48	160	1.1/2"	48.3 x 4.5	49	39	38	69,9	35,7	95	38	56	13,5
AFS 108/90 SRE 60	200	2"	60.3 x 5.6	61	49	51	77,8	42,9	110	42	65	13,5
AFS 108/90 SRE 76	200	2"	76.1 x 7.1	77	62	51	77,8	42,9	110	42	65	13,5

PN = Nominal pressure PB = Max. operating pressure

Product versions

AFS 90 SRE M (3000 / 6000 PSI)	SAE welded on flange, angle 90°, with metric screw set and O-ring
AFS 90 SRE U (3000 / 6000 PSI)	SAE welded on flange, angle 90°, with UNC screw set and O-ring