

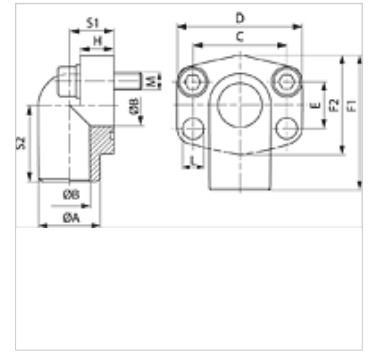
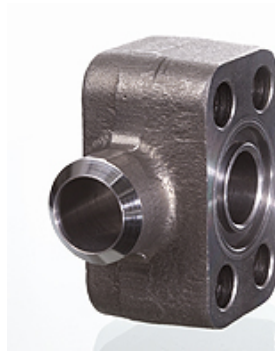
# AFS 90 ST (3000 PSI)

SAE welded on flange, angle 90°

**HANSA FLEX**

## Properties

Pressure series	3000 psi
Standard	SAE J 518 C ISO 6162
Construction	Angle 90°
Design	SAE welded on flange
Mounting	with metric screw set
Scope of supply	flange only
Material	S355J2G3 (ST52.3)
Surface	black oiled



## Note

The stated maximum working pressure relates to the flange. The actual working pressure is determined by the pipe (wall thickness) and the quality of the pipe.

Recommended screws are listed in the columns M (metr) and M (unc).

## Item

Identification	PB 10.9 (bar)	Size	Ø A (mm)	Ø B (mm)	C (mm)	D (mm)	E (mm)	F1 (mm)	F2 (mm)	H (mm)	S1 (mm)	S2 (mm)	L (mm)	M metr.
AFS 200/90 ST	350	3/4"	27,0	19	47,6	70	22,2	63	50	21,0	23,0	41	11,0	M 10 x 40
AFS 202/90 ST	315	1"	34,5	23	52,4	75	26,2	72	60	24,0	25,0	48	11,0	M 10 x 45
AFS 204/90 ST	250	1.1/4"	43,0	31	58,7	86	30,2	82	68	25,0	27,0	54	11,5	M 10 x 45
AFS 206/90 ST	200	1.1/2"	50,0	35	69,9	97	35,7	92	78	29,0	31,5	57	14,0	M 12 x 50
AFS 208/90 ST	200	2"	65,0	48	77,8	100	42,9	99	90	50,0	37,5	63	14,0	M 12 x 70

PN = Nominal pressure PB = Max. operating pressure

## Product versions

AFS 90 ST M (3000 / 6000 PSI) SAE welded on flange, angle 90°, with metric screw set and O-ring