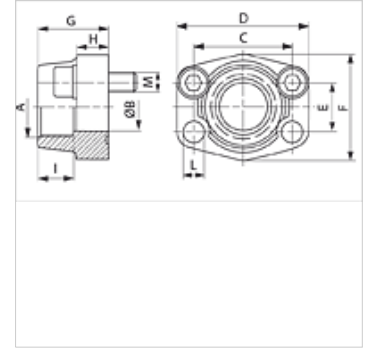


# AFS N (3000 PSI)

## SAE screw-in flange, NPT

### Properties

<b>Pressure series</b>	3000 psi
<b>Standard</b>	SAE J 518 C ISO 6162
<b>Construction</b>	straight
<b>Design</b>	SAE screw-in flange
<b>Mounting</b>	Screw bore hole
<b>Scope of supply</b>	flange only
<b>Material</b>	S355J2G3 (ST52.3)
<b>Surface</b>	black oiled



### Note

The stated maximum working pressure relates to the flange. The actual working pressure is determined by the pipe (wall thickness) and the quality of the pipe.

Recommended screws are listed in the columns M (metr) and M (unc).

### Item

Identification	PB 10.9	Size	A	Ø B	C	D	E	F	G	H	I	L	M metr.	M unc
	(bar)			(mm)	(mm)	(mm)	(mm)	(mm)	(mm)	(mm)	(mm)	(mm)		
<b>AFS 80 N 1/2</b>	350	1/2"	NPT 1/2"	13	38,1	54	17,5	46	36	16	19	9,0	M 8 x 30	5/16" x 1.1/4"
<b>AFS 80 N 3/8</b>	350	1/2"	NPT 3/8" -18	13	38,1	54	17,5	46	36	16	19	9,0	M 8 x 30	5/16" x 1.1/4"
<b>AFS 100 N 1/2</b>	350	3/4"	NPT 1/2"	13	47,6	65	22,2	50	36	18	19	11,0	M 10 x 35	3/8" x 1.1/2"
<b>AFS 100 N 3/4</b>	350	3/4"	NPT 3/4" -14	19	47,6	65	22,2	50	36	18	19	11,0	M 10 x 35	3/8" x 1.1/2"
<b>AFS 102 N 3/4</b>	315	1"	NPT 3/4" -14	19	52,4	70	26,2	55	35	21	19	11,0	M 10 x 35	3/8" x 1.1/2"
<b>AFS 102 N 1</b>	315	1"	NPT 1"	25	52,4	70	26,2	55	38	18	22	11,0	M 10 x 35	3/8" x 1.1/2"
<b>AFS 104 N 1</b>	250	1.1/4"	NPT 1"	25	58,7	81	30,2	65	42	25	22	11,5	M 10 x 40	7/16" x 1.1/2"
<b>AFS 104 N1 1/4</b>	250	1.1/4"	NPT 1.1/4"	32	58,7	79	30,2	68	41	21	22	11,5	M 10 x 40	7/16" x 1.1/2"
<b>AFS 106 N1 1/4</b>	200	1.1/2"	NPT 1.1/4"	32	69,9	95	35,7	78	45	27	24	13,5	M 12 x 45	1/2" x 1.3/4"
<b>AFS 106 N1 1/2</b>	200	1.1/2"	NPT 1.1/2"	38	69,9	93	35,7	78	45	25	24	13,5	M 12 x 45	1/2" x 1.3/4"
<b>AFS 108 N1 1/2</b>	200	2"	NPT 1.1/2"	38	77,8	102	42,9	90	45	25	26	13,5	M 12 x 45	1/2" x 1.3/4"
<b>AFS 108 N 2</b>	200	2"	NPT 2" -11.5	51	77,8	102	42,9	90	45	25	30	13,5	M 12 x 45	1/2" x 1.3/4"
<b>AFS 110 N2 1/2</b>	160	2.1/2"	NPT 2.1/2" -11.5	63	88,9	114	50,8	105	50	25	30	13,5	M 12 x 45	1/2" x 1.3/4"
<b>AFS 112 N</b>	138	3"	NPT 3" -11.5	73	106,4	134	61,9	124	50	27	34	17,5	M 16 x 50	5/8" x 2"
<b>AFS 114 N</b>	35	3.1/2"	NPT 3.1/2" -11.5	89	120,7	152	69,9	136	48	27	34	17,5	M 16 x 50	5/8" x 2"
<b>AFS 116 N</b>	35	4"	NPT 4" -11.5	99	130,2	162	77,8	146	48	27	34	17,5	M 16 x 50	5/8" x 2"

PN = Nominal pressure PB = Max. operating pressure

### Product versions

<b>AFS N M (3000 / 6000 PSI)</b>	SAE screw-in flange, NPT, with metric screw set and O-ring
<b>AFS N U (3000 / 6000 PSI)</b>	SAE screw-in flange, NPT, with UNC screw set and O-ring