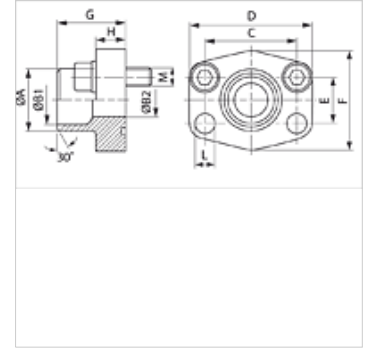
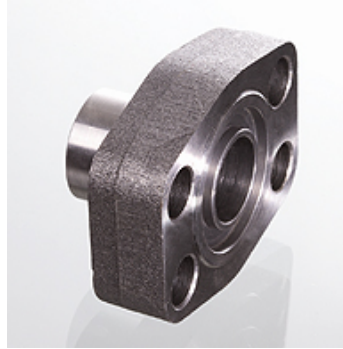


AFS SRE (3000 PSI)

SAE stub end

Properties

Pressure series	3000 psi
Standard	SAE J 518 C ISO 6162
Construction	straight
Design	SAE stub end
Mounting	Screw bore hole
Scope of supply	flange only
Material	S355J2G3 (ST52.3)
Surface	black oiled



Note

The stated maximum working pressure relates to the flange. The actual working pressure is determined by the pipe (wall thickness) and the quality of the pipe.

Recommended screws are listed in the columns M (metr) and M (unc).

Item

Identification	PB 10.9 (bar)	Size	Pipe	A (mm)	B1 (mm)	B2 (mm)	G (mm)	C (mm)	E (mm)	H (mm)	L (mm)	M metr.	M unc
AFS 80 SRE 20	350	1/2"	20 x 3	20	14,0	14	35,0	38,1	17,5	16,0	9,0	M 8 x 30	5/16" x 1.1/4"
AFS 80 SRE 22	350	1/2"	22 x 3	22	16,0	13	35,0	38,1	17,5	16,0	9,0	M 8 x 30	5/16" x 1.1/4"
AFS 100 SRE 25	350	3/4"	25 x 3	25	19,0	19	36,0	47,6	22,2	18,0	11,0	M 10 x 35	3/8" x 1.1/2"
AFS 100 SRE 28	350	3/4"	28 x 3	28	21,5	19	36,0	47,6	22,2	18,0	11,0	M 10 x 35	3/8" x 1.1/2"
AFS 102 SRE 30	315	1"	30 x 4	30	22,0	22	38,0	52,4	26,2	18,0	11,0	M 10 x 35	3/8" x 1.1/2"
AFS 102 SRE 35	315	1"	35 x 4	35	27,0	25	38,0	52,4	26,2	18,0	11,0	M 10 x 35	3/8" x 1.1/2"
AFS 104 SRE 38	250	1.1/4"	38 x 4	38	30,0	30	41,0	58,7	30,2	21,0	11,5	M 10 x 40	7/16" x 1.1/2"
AFS 104 SRE 42	250	1.1/4"	42 x 3	43	36,0	31	41,0	58,7	30,2	21,0	11,5	M 10 x 40	7/16" x 1.1/2"
AFS 106 SRE 38	200	1.1/2"	38 x 4	38	30,0	30	44,0	69,9	35,7	25,0	13,5	M 12 x 45	1/2" x 1.3/4"
AFS 106 SRE 42	200	1.1/2"	42 x 3	42	36,0	36	44,0	69,9	35,7	25,0	13,5	M 12 x 45	1/2" x 1.3/4"
AFS 106 SRE 48.3	200	1.1/2"	48.3 x 4.5	49	38,0	38	44,0	69,9	35,7	25,0	13,5	M 12 x 45	1/2" x 1.3/4"
AFS 108 SRE 60	200	2"	60.3 x 5.6	61	49,0	49	45,0	77,8	42,9	25,0	13,5	M 12 x 45	1/2" x 1.3/4"
AFS 110 SRE 76	160	2.1/2"	76.1 x 7.1	77	62,0	62	50,0	88,9	50,8	25,0	13,5	M 12 x 45	1/2" x 1.3/4"
AFS 112 SRE 76	160	3"	76.1 x 7.1	77	62,0	62	51,0	106,4	61,9	26,0	17,5	M 16 x 50	5/8" x 2"

PN = Nominal pressure PB = Max. operating pressure

Product versions

AFS SRE M (3000 / 6000 PSI) SAE stub end, with metric screw set and O-ring

AFS SRE U (3000 / 6000 PSI) SAE stub end, with UNC screw set and O-ring