

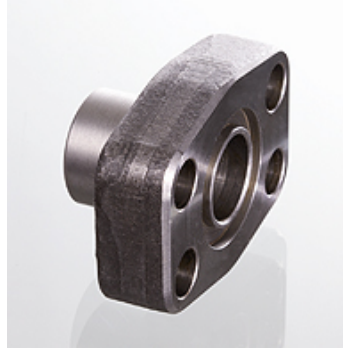
AFS STRE (3000 PSI)

SAE stub end



Properties

Pressure series	3000 psi
Standard	SAE J 518 C ISO 6162
Construction type	ND 40
Construction	straight
Design	SAE stub end
Mounting	Screw bore hole
Scope of supply	flange only
Material	S355J2G3 (ST52.3)
Surface	black oiled



Note

The stated maximum working pressure relates to the flange. The actual working pressure is determined by the pipe (wall thickness) and the quality of the pipe.

Recommended screws are listed in the columns M (metr) and M (unc).

Item

Identification	PB 10.9 (bar)	Size	Pipe	A (mm)	B1 (mm)	B2 (mm)	G (mm)	C (mm)	E (mm)	H (mm)	L (mm)	M metr.	M unc
AFS 80 STRE 21.3	350	1/2"	21.3 x 2.6	22	16,0	13	35,0	38,1	17,5	16,0	9,0	M 8 x 30	5/16" x 1.1/4"
AFS 100 STRE 26.9	350	3/4"	26.9 x 2.6	28	21,5	19	36,0	47,6	22,3	18,0	11,0	M 10 x 35	3/8" x 1.1/2"
AFS 102 STRE 33.7	315	1"	33.7 x 3.2	35	27,0	25	38,0	52,4	26,2	18,0	11,0	M 10 x 35	3/8" x 1.1/2"
AFS 104 STRE 42.2	250	1.1/4"	42.4 x 3.2	43	36,0	31	41,0	58,7	30,2	21,0	11,5	M 10 x 40	7/16" x 1.1/2"
AFS 106 STRE 48.3	200	1.1/2"	48.3 x 3.2	49	42,0	38	44,0	69,9	35,7	25,0	13,5	M 12 x 45	1/2" x 1.3/4"
AFS 108 STRE 48.3	200	2"	48.3 x 3.2	49	42,0	42	45,0	77,8	42,9	25,0	13,5	M 12 x 45	1/2" x 1.3/4"
AFS 108 STRE 60.3	200	2"	60.3 x 3.6	61	53,0	49	45,0	77,8	42,9	25,0	13,5	M 12 x 45	1/2" x 1.3/4"
AFS 110 STRE 60.3	160	2.1/2"	60.3 x 3.6	61	53,0	53	50,0	88,9	50,8	25,0	13,5	M 12 x 45	1/2" x 1.3/4"
AFS 110 STRE 76.1	160	2.1/2"	76.1 x 3.6	77	70,0	62	50,0	88,9	50,8	25,0	13,5	M 12 x 45	1/2" x 1.3/4"
AFS 112 STRE 88.9	138	3"	88.9 x 3.6	90	82,0	74	51,0	106,4	61,9	26,0	17,5	M 16 x 50	5/8" x 2"
AFS 114 STRE 76.1	35	3.1/2"	76.1 x 3.6	77	70,0	70	48,0	120,7	69,9	26,0	17,5	M 16 x 50	5/8" x 2"
AFS 114 STRE 88.9	35	3.1/2"	88.9 x 3.6	90	82,0	82	48,0	120,7	69,9	26,0	17,5	M 16 x 50	5/8" x 2"
AFS 116 STRE 114.3	35	4"	114 x 3.6	115	107,0	102	48,0	130,2	77,8	26,0	17,5	M 16 x 50	5/8" x 2"
AFS 116 STRE 88.9	35	4"	88.9 x 3.6	90	82,0	82	48,0	130,2	77,8	26,0	17,5	M 16 x 50	5/8" x 2"
AFS 118 STRE 139.7 *	35	5"	139.7 x 4	131	120,0	131	28,0	152,4	92,1	28,0	17,5	M 16 x 55	5/8" x 2"

PN = Nominal pressure PB = Max. operating pressure - *) AFS 118 STRE 139.7: Design as socket weld flat flange.

Product versions

AFS STRE M (3000 PSI)	SAE stub end, with metric screw set and O-ring
AFS STRE U (3000 PSI)	SAE stub end, with UNC screw set and O-ring