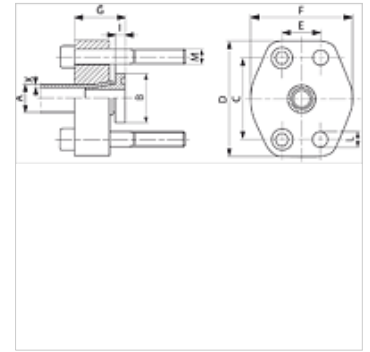


BF (6000 PSI)

SAE flare flange

Properties

Pressure series	6000 psi
Standard	SAE J 518 C ISO 6162
Construction	straight
Design	SAE flare flange
Mounting	with metric screw set
Scope of supply	with metric screw set and O-ring
Material	Flange: Steel C 45, flared part: 42CrMo4V
Surface	black oiled



Note

The stated maximum working pressure relates to the flange. The actual working pressure is determined by the pipe (wall thickness) and the quality of the pipe.

Item

Identification	PB 10.9 (bar)	Size	Pipe A x X (mm)	Ø B (mm)	C (mm)	D (mm)	E (mm)	F (mm)	G (mm)	I (mm)	L (mm)	Screws
BF 402-25-3	400	3/4"	25 x 3	38,1	50,8	71	23,8	60	37,5	8,3	11	(4 x) M 10 x 40
BF 402-25-4	400	3/4"	25 x 4	38,1	50,8	71	23,8	60	37,5	8,3	11	(4 x) M 10 x 40
BF 403-30-4	400	1"	30 x 4	47,6	57,2	81	27,8	71	42,5	8,7	13	(4 x) M 12 x 40
BF 403-30-5	400	1"	30 x 5	47,6	57,2	81	27,8	71	42,5	8,7	13	(4 x) M 12 x 40
BF 404-38-6	400	1.1/4"	38 x 6	53,9	66,7	95	31,8	81	44,0	9,2	15	(4 x) M 14 x 45
BF 405-50-6	400	1.1/2"	50 x 6	63,5	79,4	114	36,5	96	57,0	10,3	17	(4 x) M 16 x 60
BF 405-50-8	400	1.1/2"	50 x 8	63,5	79,4	114	36,5	96	57,0	10,3	17	(4 x) M 16 x 60
BF 406-65-8	400	2"	65 x 8	75,2	96,8	134	44,5	114	65,0	11,2	21	(4 x) M 20 x 90

PN = Nominal pressure PB = Max. operating pressure