

# WF LK 3

Pump connection (3 hole), angle 90°

**HANSA FLEX**

## Properties

**Design** Pump connection (3 hole)

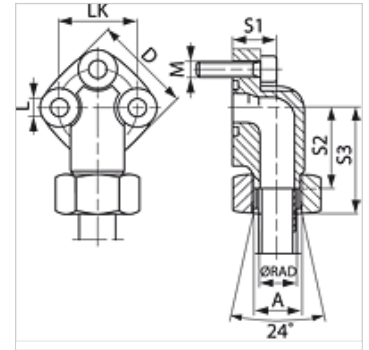
**Construction** Angle 90°

**Mounting** with metric screw set

**Scope of supply** with metric screw set and O-ring

**Material** Malleable cast iron GTW 40

**Surface** electro galvanised



## Note

The stated maximum working pressure relates to the flange. The actual working pressure is determined by the pipe (wall thickness) and the quality of the pipe.

## Item

Identification	Series	Ø RAD (mm)	Pressure PB (bar)	LK (mm)	A	D (mm)	S1 (mm)	S2 (mm)	S3 (mm)	L (mm)	Screws	OR
WF 30 LK L 12-3	L	12	250	30	M18x1,5	38	19	30,0	46,5	6,4	(3 x) M 6 x 25	16.0 x 2.5
WF 30 LK L 15-3	L	15	250	30	M22x1,5	38	19	30,0	46,0	6,4	(3 x) M 6 x 25	16.0 x 2.5
WF 40 LK L 22-3	L	22	160	40	M30x2	48	25	35,5	52,5	8,4	(3 x) M 8 x 30	24.0 x 2.5
WF 40 LK L 28-3	L	28	160	40	M36x2	48	25	35,5	52,5	8,4	(3 x) M 8 x 30	24.0 x 2.5

Series: LL = Very light L = Light S = Heavy - PN = Nominal pressure PB = Max. operating pressure - Ø RAD = External pipe diameter

## Product versions

**WF LK 3 M** Pump connection (3 hole), angle 90°, with screw set, O-ring, nut and cutting ring