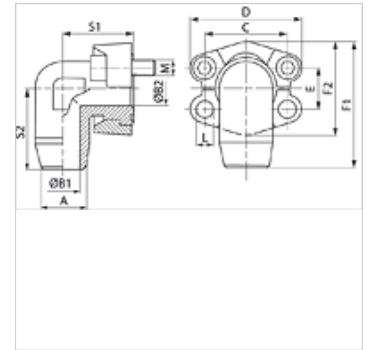


WFS U (3000 / 6000 PSI)

SAE flange adapter, welded on, angle 90°

Properties

Standard	SAE J 518 C ISO 6162
Construction	Angle 90°
Design	SAE flange adapter welded on connecting piece
Scope of supply	with 2 flange halves, screw set and O-ring
Material	S355J2G3 (ST52.3)
Surface	black oiled



Note

In accordance with SAE J 518 C, the specified nominal pressure is defined by the flange or based on the pipe to be welded on.

Item

Identification	Pressure series	PB 10.9 (bar)	Size	A (mm)	B1 (mm)	B2 (mm)	C (mm)	D (mm)	E (mm)	F1 (mm)	F2 (mm)	S1 (mm)	S2 (mm)	L (mm)	Screws
WFS 3001-15 U	3000 PSI	350	1/2"	15	11	11	38,1	54,0	17,5	60,8	45,6	39	38	8,7	(4 x) UNC 5/16 x 1.1/4
WFS 3001-16 U	3000 PSI	350	1/2"	16	10	10	38,1	54,0	17,5	60,8	45,6	39	38	8,7	(4 x) UNC 5/16 x 1.1/4
WFS 3002-18 U	3000 PSI	350	3/4"	18	15	19	47,6	64,9	22,2	70,9	51,8	42	45	10,7	(4 x) UNC 3/8 x 1.1/2
WFS 3002-20 U	3000 PSI	350	3/4"	20	14	17	47,6	64,9	22,2	70,9	51,8	42	45	10,7	(4 x) UNC 3/8 x 1.1/2
WFS 3002-22 U	3000 PSI	350	3/4"	22	18	19	47,6	64,9	22,2	70,9	51,8	42	45	10,7	(4 x) UNC 3/8 x 1.1/2
WFS 3002-25 U	3000 PSI	350	3/4"	25	17	17	47,6	64,3	22,2	70,9	51,8	42	45	10,7	(4 x) UNC 3/8 x 1.1/2
WFS 3003-25 U	3000 PSI	315	1"	25	19	21	52,4	69,9	26,2	79,2	58,4	45	50	10,7	(4 x) UNC 3/8 x 1.1/2
WFS 3003-28 U	3000 PSI	315	1"	28	24	25	52,4	69,9	26,2	79,2	58,4	45	50	10,7	(4 x) UNC 3/8 x 1.1/2
WFS 3003-30 U	3000 PSI	315	1"	30	21	21	52,4	69,9	26,2	79,2	58,4	45	50	10,7	(4 x) UNC 3/8 x 1.1/2
WFS 3004-25 U	3000 PSI	250	1.1/4"	25	19	27	58,7	79,4	30,2	85,3	72,6	50	59	12,0	(4 x) UNC 7/16 x 1.1/2
WFS 3004-30 U	3000 PSI	250	1.1/4"	30	22	27	58,7	79,4	30,2	85,3	72,6	50	59	12,0	(4 x) UNC 7/16 x 1.1/2
WFS 3004-35 U	3000 PSI	250	1.1/4"	35	31	32	58,7	79,4	30,2	85,3	72,6	50	59	12,0	(4 x) UNC 7/16 x 1.1/2
WFS 3004-38 U	3000 PSI	250	1.1/4"	38	28	27	56,7	79,4	30,2	85,3	72,6	50	59	12,0	(4 x) UNC 7/16 x 1.1/2
WFS 3005-38 U	3000 PSI	200	1.1/2"	38	30	32	69,9	93,8	35,7	117,1	82,2	76	76	13,5	(4 x) UNC 1/2 x 1.3/4
WFS 3005-42 U	3000 PSI	200	1.1/2"	42	36	36	69,9	93,8	35,7	117,1	82,2	76	76	13,5	(4 x) UNC 1/2 x 1.3/4
WFS 6001-16 U	6000 PSI	400	1/2"	16	10	10	40,5	56,0	18,2	61,6	47,2	39	38	8,7	(4 x) UNC 5/16 x 1.1/4
WFS 6002-16 U	6000 PSI	400	3/4"	16	10	17	50,8	71,0	23,8	78,0	60,0	48	48	10,7	(4 x) UNC 3/8 x 1.1/2
WFS 6002-20 U	6000 PSI	400	3/4"	20	12	17	50,8	71,0	23,8	78,0	60,0	48	48	10,7	(4 x) UNC 3/8 x 1.1/2
WFS 6002-25 U	6000 PSI	400	3/4"	25	15	17	50,8	71,0	23,8	78,0	60,0	48	48	10,7	(4 x) UNC 3/8 x 1.1/2
WFS 6003-25 U	6000 PSI	400	1"	25	15	20	57,2	81,0	27,8	94,0	69,6	60	60	*1	(4 x) UNC 7/16 x 1.1/2
WFS 6003-30 U	6000 PSI	400	1"	30	22	25	57,2	81,0	27,8	94,0	69,6	60	60	*1	(4 x) UNC 7/16 x 1.1/2
WFS 6004-30 U	6000 PSI	315	1.1/4"	30	22	27	66,7	95,0	31,8	106,6	77,2	68	68	*2	(4 x) UNC 1/2 x 1.3/4
WFS 6004-38 U	6000 PSI	315	1.1/4"	38	28	30	66,7	95,0	31,8	106,6	77,2	68	68	*2	(4 x) UNC 1/2 x 1.3/4
WFS 6005-38 U	6000 PSI	315	1.1/2"	38	28	32	79,4	113,0	36,5	123,5	95,0	76	76	17,0	(4 x) UNC 5/8 x 2

PN = Nominal pressure PB = Max. operating pressure

*1) = Choice of 12.0 or 12.5 - *2) = Choice of 13.5 or 14.5

Product versions

WFS (3000 PSI)	SAE flange adapter, welded on, angle 90°, flange only
WFS M (3000 / 6000 PSI)	SAE flange adapter, welded on, angle 90°, with 2 flange halves, screw set and O-ring