

BZL / BZS

Lock without union nut

Properties

Sealing form 1 24° outer cone with O-ring

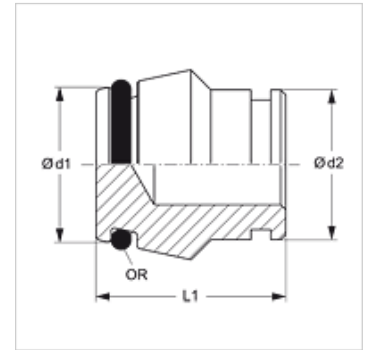
Design Lock without union nut

Construction straight

Standard DIN 2353
ISO 8434-1

Material Steel

Surface electro galvanised



Note

Information about fitting, installation, pressure loads and permissible operating temperatures can be found in the technical information for pipe fittings.

Item

Identification	Series	Operating pressure	Ø d1 (mm)	Ø d2 (mm)	L1 (mm)	OR
BZL NW 04	L	PN 315	6,6	6	18,5	4.0 x 1.5
BZL NW 06	L	PN 315	8,5	8	18,0	6.0 x 1.5
BZL NW 08	L	PN 315	10,6	10	19,5	7.5 x 1.5
BZL NW 10	L	PN 315	12,6	12	19,0	9.0 x 1.5
BZL NW 13	L	PN 315	15,5	15	19,0	12.0 x 2.0
BZL NW 16	L	PN 315	18,6	18	22,0	15.0 x 2.0
BZL NW 20	L	PN 160	22,6	22	22,0	20.0 x 2.0
BZL NW 25	L	PN 160	28,5	28	23,5	26.0 x 2.0
BZL NW 32	L	PN 160	36,0	35	27,0	32.0 x 2.5
BZL NW 40	L	PN 160	43,0	42	27,5	38.0 x 2.5
BZS NW 10	S	PN 630	14,5	14	21,0	10.0 x 2.0
BZS NW 13	S	PN 400	16,5	16	22,0	12.0 x 2.0
BZS NW 16	S	PN 400	20,9	20	26,5	16.3 x 2.4
BZS NW 20	S	PN 400	25,9	25	27,5	20.3 x 2.4
BZS NW 25	S	PN 400	31,0	30	28,5	25.3 x 2.4
BZS NW 32	S	PN 315	39,0	38	32,5	33.3 x 2.4

Series: LL = Very light L = Light S = Heavy – PN = Nominal pressure PB = Max. operating pressure – Ø = External pipe diameter

Product versions

BZL / BZS MG Lock without union nut, Brass

BZL VA / BZS VA Lock without union nut, Stainless steel