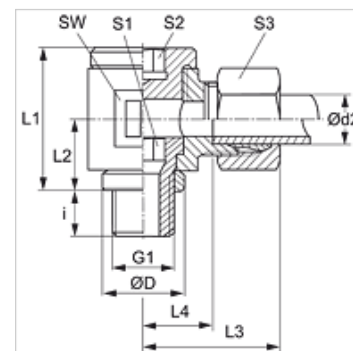


Properties

Connection 1	metric cylindrical outer thread
Sealing form 1	Edge sealing ring
Connection 2	metric cylindrical outer thread
Sealing form 2	24° inner cone
Design	Banjo coupling, throttle free
Construction	Angle 90°
Standard	DIN 2353 ISO 8434-1
Scope of supply	Socket with union nut and cutting ring
Material	Steel
Surface	electro galvanised



Note

Information about fitting, installation, pressure loads and permissible operating temperatures can be found in the technical information for pipe fittings.

Item

Identification	Series	Operating pressure	Ø d2 (mm)	G1	Ø D (mm)	i (mm)	L1 (mm)	L2 (mm)	L3 (mm)	L4 (mm)	AF (mm)	S1	S2	S3
DWM NW 04 HL	L	PN 160	6	M 10 x 1	14	8	24	12	27	12,5	19	6	6	14
DWM NW 06 HL	L	PN 160	8	M 12 x 1.5	17	12	30	15	29	14,5	22	6	6	17
DWM NW 08 HL	L	PN 100	10	M 14 x 1.5	19	12	30	16	30	15,5	22	8	8	19
DWM NW 10 HL	L	PN 100	12	M 16 x 1.5	21	12	37	18	33	18,0	27	10	10	22
DWM NW 10 HL 18	L	PN 100	12	M 18 x 1.5	23	12	37	18	33	18,0	30	12	12	22
DWM NW 13 HL	L	PN 100	15	M 18 x 1.5	23	12	40	20	36	20,0	30	12	12	27
DWM NW 16 HL	L	PN 100	18	M 22 x 1.5	27	14	46	23	38	21,5	36	14	14	32
DWM NW 20 HL	L	PN 100	22	M 26 x 1.5	31	16	51	25	42	26,0	41	17	17	36
DWM NW 25 HL	L	PN 100	28	M 33 x 2	39	18	64	32	48	31,5	50	22	22	41
DWM NW 32 HL	L	PN 63	35	M 42 x 2	49	20	76	37	57	35,5	60	27	27	50
DWM NW 40 HL	L	PN 63	42	M 48 x 2	55	22	85	42	63	40,0	70	32	32	60
DWM NW 03 HS	S	PN 160	6	M 12 x 1.5	17	12	30	15	31	16,5	22	6	6	17
DWM NW 04 HS	S	PN 160	8	M 14 x 1.5	19	12	30	16	31	16,5	22	8	8	19
DWM NW 06 HS	S	PN 100	10	M 16 x 1.5	21	12	37	18	35	18,5	27	10	10	22
DWM NW 08 HS	S	PN 100	12	M 18 x 1.5	23	12	41	20	37	20,5	30	12	12	24
DWM NW 10 HS	S	PN 100	14	M 20 x 1.5	25	14	42	21	41	23,0	32	12	12	27
DWM NW 13 HS	S	PN 100	16	M 22 x 1.5	27	14	46	23	41	22,5	36	14	14	30
DWM NW 16 HS	S	PN 100	20	M 27 x 2	32	16	58	28	49	27,5	46	17	17	36
DWM NW 20 HS	S	PN 100	25	M 33 x 2	39	18	64	32	55	31,0	50	22	22	46
DWM NW 25 HS	S	PN 63	30	M 42 x 2	49	20	76	37	63	36,5	60	27	27	50
DWM NW 32 HS	S	PN 63	38	M 48 x 2	55	22	85	42	72	41,0	70	32	32	60

PN = Nominal pressure PB = Max. operating pressure – Series: LL = Very light L = Light S = Heavy – Ø d2 = External pipe diameter

Product versions

DWM VA	Banjo fitting, throttle free, angle 90°, Stainless steel
XDWM	Banjo fitting, throttle free, angle 90°, Steel