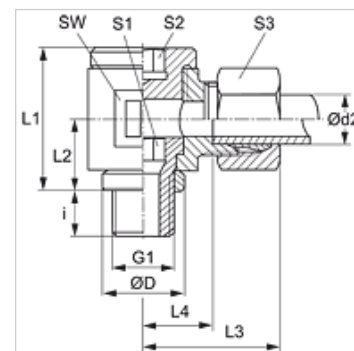


Properties

Connection 1	BSP external thread, cylindrical
Sealing form 1	Edge sealing ring
Connection 2	metric cylindrical outer thread
Sealing form 2	24° inner cone
Design	Banjo coupling, throttle free
Construction	Angle 90°
Standard	DIN 2353 ISO 8434-1
Scope of supply	Socket with union nut and cutting ring
Material	Steel
Surface	electro galvanised



Note

Information about fitting, installation, pressure loads and permissible operating temperatures can be found in the technical information for pipe fittings.

Item

Identification	Series	Operating pressure	Ø d2 (mm)	G1	Ø D (mm)	i (mm)	L1 (mm)	L2 (mm)	L3 (mm)	L4 (mm)	AF (mm)	S1	S2	S3
DWR NW 04 HL	L	PN 160	6	G 1/8" -28	14	8	24	12	27	12,5	19	6	6	14
DWR NW 06 HL	L	PN 160	8	G 1/4" -19	18	12	30	16	29	14,5	22	8	8	17
DWR NW 08 HL	L	PN 100	10	G 1/4" -19	18	12	30	16	30	15,5	22	8	8	19
DWR NW 10 HL	L	PN 100	12	G 3/8" -19	22	12	37	18	33	18,0	27	10	10	22
DWR NW 10 HL 1/4	L	PN 100	12	G 1/4" -19	18	12	30	16	33	18,0	22	8	8	22
DWR NW 13 HL	L	PN 100	15	G 1/2" -14	26	14	42	21	37	22,0	32	12	12	27
DWR NW 16 HL	L	PN 100	18	G 1/2" -14	26	14	46	23	38	21,5	36	12	12	32
DWR NW 20 HL	L	PN 100	22	G 3/4" -14	32	16	58	28	45	28,5	46	17	17	36
DWR NW 25 HL	L	PN 100	28	G 1" -11	39	18	64	32	48	31,5	50	22	22	41
DWR NW 32 HL	L	PN 63	35	G 1.1/4" -11	49	20	76	37	57	35,5	60	27	27	50
DWR NW 40 HL	L	PN 63	42	G 1.1/2" -11	55	22	85	42	63	40,0	70	32	32	60
DWR NW 03 HS	S	PN 160	6	G 1/4" -19	18	12	30	16	31	16,5	22	8	8	17
DWR NW 04 HS	S	PN 160	8	G 1/4" -19	18	12	30	16	31	16,5	22	8	8	19
DWR NW 06 HS	S	PN 100	10	G 3/8" -19	22	12	37	18	35	18,5	27	10	10	22
DWR NW 08 HS	S	PN 100	12	G 3/8" -19	22	12	37	18	35	18,5	27	10	10	24
DWR NW 10 HS	S	PN 100	14	G 1/2" -14	26	14	42	21	41	23,0	32	12	12	27
DWR NW 13 HS	S	PN 100	16	G 1/2" -14	26	14	46	23	41	22,5	36	12	12	30
DWR NW 16 HS	S	PN 100	20	G 3/4" -14	32	16	58	28	49	27,5	46	17	17	36
DWR NW 20 HS	S	PN 100	25	G 1" -11	39	18	64	32	55	31,0	50	22	22	46
DWR NW 25 HS	S	PN 63	30	G 1.1/4" -11	49	20	76	37	63	36,5	60	27	27	50
DWR NW 32 HS	S	PN 63	38	G 1.1/2" -11	55	22	85	42	72	41,0	70	32	32	60

PN = Nominal pressure PB = Max. operating pressure – Series: LL = Very light L = Light S = Heavy – Ø d2 = External pipe diameter

Product versions

DWR VA	Banjo fitting, throttle free, angle 90°, Stainless steel
XDWR	Banjo fitting, throttle free, angle 90°, Steel