

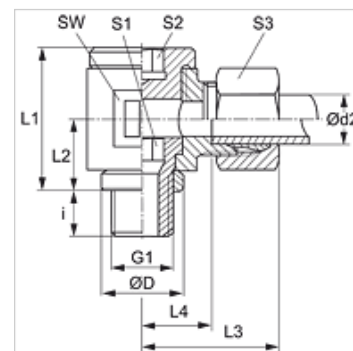
DWR VA

Banjo fitting, throttle free, angle 90°

HANSA FLEX

Properties

Connection 1	BSP external thread, cylindrical
Sealing form 1	Edge sealing ring
Connection 2	metric cylindrical outer thread
Sealing form 2	24° inner cone
Design	Banjo coupling, throttle free
Construction	Angle 90°
Standard	DIN 2353 ISO 8434-1
Scope of supply	Socket with union nut and cutting ring
Material	Stainless steel



Note

Information about fitting, installation, pressure loads and permissible operating temperatures can be found in the technical information for pipe fittings.

Item

Identification	Series	Operating pressure	Ø d2 (mm)	G1	Ø D (mm)	i (mm)	L1 (mm)	L2 (mm)	L3 (mm)	L4 (mm)	AF (mm)	S1	S2	S3
DWR NW 04 HL VA	L	PN 160	6	G 1/8" -28	14	8	24	12	27	12,5	19	6	6	14
DWR NW 06 HL VA	L	PN 160	8	G 1/4" -19	18	12	30	16	29	14,5	22	8	8	17
DWR NW 08 HL VA	L	PN 100	10	G 1/4" -19	18	12	30	16	30	15,5	22	8	8	19
DWR NW 10 HL VA	L	PN 100	12	G 3/8" -19	22	12	37	18	33	18,0	27	10	10	22
DWR NW 13 HL VA	L	PN 100	15	G 1/2" -14	26	14	42	21	37	22,0	32	12	12	27
DWR NW 16 HL VA	L	PN 100	18	G 1/2" -14	26	14	46	23	38	21,5	36	12	12	32
DWR NW 20 HL VA	L	PN 100	22	G 3/4" -14	32	16	58	28	45	28,5	46	17	17	36
DWR NW 25 HL VA	L	PN 100	28	G 1" -11	39	18	64	32	48	31,5	50	22	22	41
DWR NW 32 HL VA	L	PN 63	35	G 1.1/4" -11	49	20	76	37	57	35,5	60	27	27	50
DWR NW 40 HL VA	L	PN 63	42	G 1.1/2" -11	55	22	85	42	63	40,0	70	32	32	60
DWR NW 03 HS VA	S	PN 160	6	G 1/4" -19	18	12	30	16	31	16,5	22	8	8	17
DWR NW 04 HS VA	S	PN 160	8	G 1/4" -19	18	12	30	16	31	16,5	22	8	8	19
DWR NW 06 HS VA	S	PN 100	10	G 3/8" -19	22	12	37	18	35	18,5	27	10	10	22
DWR NW 08 HS VA	S	PN 100	12	G 3/8" -19	22	12	37	18	35	18,5	27	10	10	24
DWR NW 10 HS VA	S	PN 100	14	G 1/2" -14	26	14	42	21	41	23,0	32	12	12	27
DWR NW 13 HS VA	S	PN 100	16	G 1/2" -14	26	14	46	23	41	22,5	36	12	12	30
DWR NW 16 HS VA	S	PN 100	20	G 3/4" -14	32	16	58	28	49	27,5	46	17	17	36
DWR NW 20 HS VA	S	PN 100	25	G 1" -11	39	18	64	32	55	31,0	50	22	22	46
DWR NW 25 HS VA	S	PN 63	30	G 1.1/4" -11	49	20	76	37	63	36,5	60	27	27	50
DWR NW 32 HS VA	S	PN 63	38	G 1.1/2" -11	55	22	85	42	72	41,0	70	32	32	60

PN = Nominal pressure PB = Max. operating pressure - Series: LL = Very light L = Light S = Heavy - Ø d2 = External pipe diameter

Product versions

XDWR	Banjo fitting, throttle free, angle 90°, Steel
XDWR VA	Banjo fitting, throttle free, angle 90°, Stainless steel