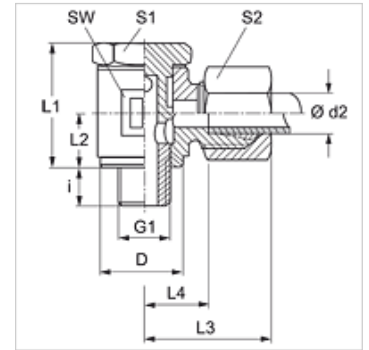


SWM VA

Banjo fitting, angle 90°

Properties

Connection 1	metric cylindrical outer thread
Sealing form 1	Edge sealing ring
Connection 2	metric cylindrical outer thread
Sealing form 2	24° inner cone
Design	Banjo fitting
Construction	Angle 90°
Standard	DIN 2353 ISO 8434-1
Scope of supply	Socket with union nut and cutting ring
Material	Stainless steel



Note

Information about fitting, installation, pressure loads and permissible operating temperatures can be found in the technical information for pipe fittings.

Item

Identification	Series	Operating pressure	Ø d2 (mm)	G1	D (mm)	i (mm)	L1 (mm)	L2 (mm)	L3 (mm)	L4 (mm)	AF (mm)	S1	S2
SWM NW 04 HL VA	L	PN 250	6	M 10 x 1	14,5	6,0	21,5	10	25	11,0	14	14	14
SWM NW 06 HL VA	L	PN 250	8	M 12 x 1.5	18,5	9,0	27,5	13	27	14,0	17	19	17
SWM NW 08 HL VA	L	PN 250	10	M 14 x 1.5	18,5	9,0	27,5	13	27	13,5	19	19	19
SWM NW 10 HL VA	L	PN 250	12	M 16 x 1.5	21,5	9,0	34,0	16	30	16,0	22	22	22
SWM NW 03 HS VA	S	PN 250	6	M 12 x 1.5	18,5	9,0	27,5	13	28	14,5	17	19	17
SWM NW 04 HS VA	S	PN 250	8	M 14 x 1.5	18,5	9,0	27,5	13	29	14,5	19	19	19
SWM NW 06 HS VA	S	PN 250	10	M 16 x 1.5	22,5	9,0	34,0	16	33	15,5	22	22	22
SWM NW 08 HS VA	S	PN 250	12	M 18 x 1.5	23,5	9,0	34,0	16	34	15,5	24	22	24

PN = Nominal pressure PB = Max. operating pressure – Series: LL = Very light L = Light S = Heavy – Ø d2 = External pipe diameter

Product versions

SWM	Banjo fitting, angle 90°, Steel
XSWM VA	Banjo fitting, angle 90°, Stainless steel