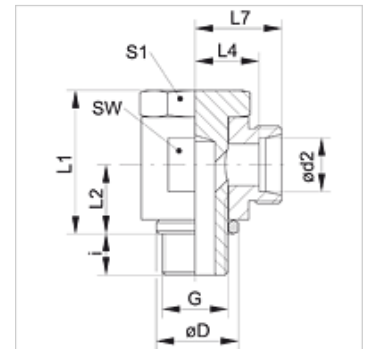


### Properties

|                        |   |
|------------------------|---|
| <b>Connection 1</b>    | metric cylindrical outer thread             |
| <b>Sealing form 1</b>  | Edge sealing ring                           |
| <b>Connection 2</b>    | metric cylindrical outer thread             |
| <b>Sealing form 2</b>  | 24° inner cone                              |
| <b>Design</b>          | Banjo coupling, throttle free               |
| <b>Construction</b>    | Angle 90°                                   |
| <b>Standard</b>        | DIN 2353<br>ISO 8434-1                      |
| <b>Scope of supply</b> | Socket (without union nut and cutting ring) |
| <b>Material</b>        | Steel                                       |
| <b>Surface</b>         | electro galvanised                          |



### Note

Information about fitting, installation, pressure loads and permissible operating temperatures can be found in the technical information for pipe fittings.

### Item

| Identification   | Series | Operating pressure | Ø d2 (mm) | G          | Ø D (mm) | i (mm) | L1 (mm) | L2 (mm) | L4 (mm) | L7 (mm) | AF (mm) | S1 |
|------------------|--------|--------------------|-----------|------------|----------|--------|---------|---------|---------|---------|---------|----|
| XSDM NW 04 HL    | L      | PN 250             | 6         | M 10 x 1   | 14       | 8      | 24,0    | 10,5    | 12,0    | 19,0    | 17      | 17 |
| XSDM NW 06 HL    | L      | PN 250             | 8         | M 12 x 1.5 | 17       | 12     | 30,0    | 14,0    | 14,5    | 21,5    | 22      | 19 |
| XSDM NW 08 HL    | L      | PN 250             | 10        | M 14 x 1.5 | 19       | 12     | 30,0    | 14,0    | 15,5    | 22,5    | 22      | 19 |
| XSDM NW 10 HL    | L      | PN 250             | 12        | M 16 x 1.5 | 21       | 12     | 36,0    | 16,5    | 18,0    | 25,0    | 27      | 24 |
| XSDM NW 10 HL 18 | L      | PN 250             | 12        | M 18 x 1.5 | 23       | 12     | 38,0    | 17,0    | 13,5    | 25,0    | 30      | 27 |
| XSDM NW 13 HL    | L      | PN 250             | 15        | M 18 x 1.5 | 23       | 12     | 39,5    | 18,5    | 20,5    | 27,5    | 30      | 27 |
| XSDM NW 16 HL    | L      | PN 250             | 18        | M 22 x 1.5 | 27       | 14     | 45,0    | 21,5    | 21,0    | 28,5    | 32      | 30 |
| XSDM NW 20 HL    | L      | PN 160             | 22        | M 26 x 1.5 | 31       | 16     | 53,0    | 24,0    | 27,5    | 35,0    | 41      | 36 |
| XSDM NW 25 HL    | L      | PN 160             | 28        | M 33 x 2   | 39       | 18     | 66,0    | 30,5    | 32,0    | 39,5    | 50      | 46 |
| XSDM NW 32 HL    | L      | PN 160             | 35        | M 42 x 2   | 49       | 20     | 76,0    | 35,5    | 36,0    | 46,5    | 60      | 55 |
| XSDM NW 40 HL    | L      | PN 160             | 42        | M 48 x 2   | 55       | 22     | 87,0    | 40,5    | 40,5    | 51,5    | 70      | 60 |
| XSDM NW 03 HS    | S      | PN 315             | 6         | M 12 x 1.5 | 17       | 12     | 30,0    | 14,0    | 16,5    | 23,5    | 22      | 19 |
| XSDM NW 04 HS    | S      | PN 315             | 8         | M 14 x 1.5 | 19       | 12     | 30,0    | 14,0    | 16,5    | 23,5    | 22      | 19 |
| XSDM NW 06 HS    | S      | PN 315             | 10        | M 16 x 1.5 | 21       | 12     | 36,0    | 16,5    | 18,5    | 26,0    | 27      | 24 |
| XSDM NW 08 HS    | S      | PN 315             | 12        | M 18 x 1.5 | 23       | 12     | 39,5    | 18,5    | 20,0    | 27,5    | 30      | 27 |
| XSDM NW 10 HS    | S      | PN 315             | 14        | M 20 x 1.5 | 25       | 14     | 43,5    | 20,0    | 22,5    | 30,5    | 32      | 30 |
| XSDM NW 13 HS    | S      | PN 315             | 16        | M 22 x 1.5 | 27       | 14     | 45,0    | 21,5    | 22,0    | 30,5    | 32      | 30 |
| XSDM NW 16 HS    | S      | PN 160             | 20        | M 27 x 2   | 32       | 16     | 53,0    | 24,0    | 26,5    | 37,0    | 41      | 36 |
| XSDM NW 20 HS    | S      | PN 160             | 25        | M 33 x 2   | 39       | 18     | 66,0    | 30,5    | 31,5    | 43,5    | 50      | 46 |
| XSDM NW 25 HS    | S      | PN 160             | 30        | M 42 x 2   | 49       | 20     | 76,0    | 35,5    | 37,0    | 50,5    | 60      | 55 |
| XSDM NW 32 HS    | S      | PN 160             | 38        | M 48 x 2   | 55       | 22     | 87,0    | 40,5    | 41,5    | 57,5    | 70      | 60 |

Series: LL = Very light L = Light S = Heavy – PN = Nominal pressure PB = Max. operating pressure – Ø = External pipe diameter

### Product versions

**SDM** Banjo fitting, throttle free, angle 90°, Steel