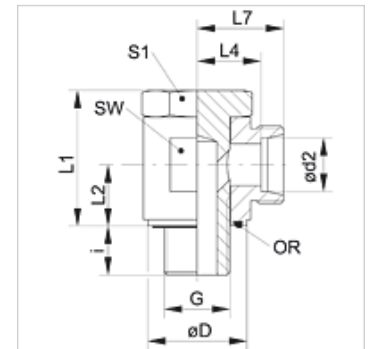


Properties

Connection 1	metric cylindrical outer thread
Sealing form 1	Shape E
Connection 2	metric cylindrical outer thread
Sealing form 2	24° inner cone
Design	Banjo coupling, throttle free
Construction	Angle 90°
Standard	DIN 2353 ISO 8434-1
Scope of supply	Socket (without union nut and cutting ring)
Material	Steel
Surface	electro galvanised



Note

Information about fitting, installation, pressure loads and permissible operating temperatures can be found in the technical information for pipe fittings.

Item

Identification	Series	Operating pressure	Ø d2 (mm)	G	Ø D (mm)	i (mm)	L1 (mm)	L2 (mm)	L4 (mm)	L7 (mm)	AF (mm)	S1	OR
XSDOM 06 LL	LL	PN 100	6	M 10 x 1	14,5	8,0	23,5	10,5	13,5	19,0	17	17	7.65 x 1.78
XSDOM 08 LL	LL	PN 100	8	M 10 x 1	14,5	8,0	23,5	10,5	13,5	19,0	17	17	7.65 x 1.78
XSDOM NW 04 HL	L	PN 315	6	M 10 x 1	14,0	8,0	24,0	10,5	12,0	19,0	17	17	7.65 x 1.78
XSDOM NW 06 HL	L	PN 315	8	M 12 x 1.5	17,0	12,0	30,0	14,0	14,5	21,5	22	19	11.10 x 1.78
XSDOM NW 08 HL	L	PN 315	10	M 14 x 1.5	19,0	12,0	30,0	14,0	15,5	22,5	22	19	11.10 x 1.78
XSDOM NW 10 HL	L	PN 315	12	M 16 x 1.5	21,0	12,0	36,0	16,5	18,0	25,0	27	24	14.00 x 1.78
XSDOM NW 10 HL 18	L	PN 315	12	M 18 x 1.5	23,5	12,0	35,0	16,5	18,0	25,0	27	24	18.77 x 1.78
XSDOM NW 13 HL	L	PN 315	15	M 18 x 1.5	23,0	12,0	39,5	18,5	21,5	28,5	30	27	18.77 x 1.78
XSDOM NW 16 HL	L	PN 315	18	M 22 x 1.5	27,0	14,0	45,0	21,5	21,0	28,5	32	30	18.77 x 1.78
XSDOM NW 20 HL	L	PN 160	22	M 26 x 1.5	31,0	16,0	53,0	24,0	27,5	35,0	41	36	23.81 x 2.62
XSDOM NW 25 HL	L	PN 160	28	M 33 x 2	39,0	18,0	66,0	30,5	32,0	39,5	50	46	29.82 x 2.62
XSDOM NW 32 HL	L	PN 160	35	M 42 x 2	49,0	20,0	76,0	35,5	36,0	46,5	60	55	37.77 x 2.62
XSDOM NW 40 HL	L	PN 160	42	M 48 x 2	55,0	22,0	87,0	40,5	40,5	51,5	70	60	41.28 x 3.53
XSDOM NW 03 HS	S	PN 400	6	M 12 x 1.5	17,5	12,0	30,0	14,0	16,5	23,5	22	19	11.10 x 1.78
XSDOM NW 04 HS	S	PN 400	8	M 14 x 1.5	19,0	12,0	30,0	14,0	16,5	23,5	22	19	11.10 x 1.78
XSDOM NW 06 HS	S	PN 400	10	M 16 x 1.5	21,0	12,0	35,0	16,5	18,5	26,0	27	24	14.00 x 1.78
XSDOM NW 08 HS	S	PN 400	12	M 18 x 1.5	23,0	12,0	39,5	18,5	20,0	27,5	30	27	18.77 x 1.78
XSDOM NW 10 HS	S	PN 400	14	M 20 x 1.5	25,0	14,0	43,5	20,0	22,5	30,5	32	30	18.77 x 1.78
XSDOM NW 13 HS	S	PN 315	16	M 22 x 1.5	27,0	14,0	45,0	21,5	22,0	30,5	32	30	18.77 x 1.78
XSDOM NW 16 HS	S	PN 315	20	M 27 x 2	32,0	16,0	53,0	24,0	26,5	37,0	41	36	23.81 x 2.62
XSDOM NW 20 HS	S	PN 250	25	M 33 x 2	39,0	18,0	66,0	30,5	31,5	43,5	50	46	29.82 x 2.62
XSDOM NW 25 HS	S	PN 160	30	M 42 x 2	49,0	20,0	76,0	35,5	37,0	50,5	60	55	37.77 x 2.62
XSDOM NW 32 HS	S	PN 160	38	M 48 x 2	55,0	22,0	87,0	40,5	41,5	57,5	70	60	41.28 x 3.53

PN = Nominal pressure PB = Max. operating pressure - Series: LL = Very light L = Light S = Heavy - Ø = External pipe diameter

Product versions

XSDOM VA	Banjo fitting, throttle free, angle 90°, Stainless steel
SDOM	Banjo fitting, throttle free, angle 90°, Steel