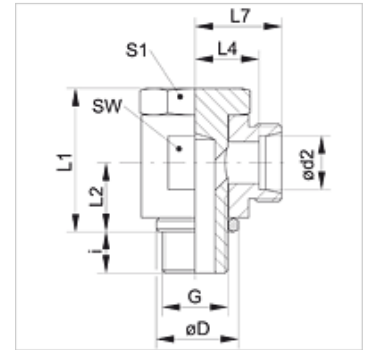


Properties

Connection 1	BSP external thread, cylindrical
Sealing form 1	Edge sealing ring
Connection 2	metric cylindrical outer thread
Sealing form 2	24° inner cone
Design	Banjo coupling, throttle free
Construction	Angle 90°
Standard	DIN 2353 ISO 8434-1
Scope of supply	Socket (without union nut and cutting ring)
Material	Steel
Surface	electro galvanised



Note

Information about fitting, installation, pressure loads and permissible operating temperatures can be found in the technical information for pipe fittings.

Item

Identification	Series	Operating pressure	Ø d2 (mm)	G	Ø D (mm)	i (mm)	L1 (mm)	L2 (mm)	L4 (mm)	L7 (mm)	AF (mm)	S1
XSDR NW 04 HL	L	PN 250	6	G 1/8" -28	14	8	24	10,5	12,0	19,0	17	17
XSDR NW 04 HL 1/4	L	PN 250	6	G 1/4" -19	18	12	30	14,0	14,5	21,5	22	19
XSDR NW 06 HL	L	PN 250	8	G 1/4" -19	18	12	30	14,0	14,5	21,5	22	19
XSDR NW 08 HL	L	PN 250	10	G 1/4" -19	18	12	30	14,0	15,5	22,5	22	19
XSDR NW 10 HL 1/4	L	PN 250	12	G 1/4" -19	22	12	30	14,0	15,5	22,5	22	19
XSDR NW 10 HL	L	PN 250	12	G 3/8" -19	22	12	36	16,5	18,0	25,0	27	24
XSDR NW 10 HL 1/2	L	PN 250	12	G 1/2" -14	26	14	45	21,5	20,5	28,5	32	30
XSDR NW 13 HL	L	PN 250	15	G 1/2" -14	26	14	45	21,5	21,5	28,5	32	30
XSDR NW 16 HL	L	PN 250	18	G 1/2" -14	26	14	45	21,5	21,0	28,5	32	30
XSDR NW 20 HL	L	PN 160	22	G 3/4" -14	32	16	53	24,0	27,5	35,0	41	36
XSDR NW 25 HL	L	PN 160	28	G 1" -11	39	18	66	30,5	32,0	39,5	50	46
XSDR NW 32 HL	L	PN 160	35	G 1.1/4" -11	49	20	76	35,5	36,0	46,5	60	55
XSDR NW 40 HL	L	PN 160	42	G 1.1/2" -11	55	22	87	40,5	40,5	51,5	70	60
XSDR NW 03 HS	S	PN 315	6	G 1/4" -19	18	12	30	14,0	16,5	23,5	22	19
XSDR NW 04 HS	S	PN 315	8	G 1/4" -19	18	12	30	14,0	16,5	23,5	22	19
XSDR NW 06 HS	S	PN 315	10	G 3/8" -19	22	12	36	16,5	18,5	26,0	27	24
XSDR NW 08 HS	S	PN 315	12	G 3/8" -19	22	12	36	16,5	18,5	26,0	27	24
XSDR NW 10 HS	S	PN 315	14	G 1/2" -14	26	14	45	21,5	22,5	30,5	32	30
XSDR NW 13 HS	S	PN 315	16	G 1/2" -14	26	14	45	21,5	22,0	30,5	32	30
XSDR NW 16 HS	S	PN 160	20	G 3/4" -14	32	16	53	24,0	26,5	37,0	41	36
XSDR NW 20 HS	S	PN 160	25	G 1" -11	39	18	66	30,5	31,5	43,5	50	46
XSDR NW 25 HS	S	PN 160	30	G 1.1/4" -11	49	20	76	35,5	37,0	50,5	60	55
XSDR NW 32 HS	S	PN 160	38	G 1.1/2" -11	55	22	87	40,5	41,5	57,5	70	60

Series: LL = Very light L = Light S = Heavy - PN = Nominal pressure PB = Max. operating pressure - Ø = External pipe diameter

Product versions

XSDR VA	Banjo fitting, throttle free, angle 90°, Stainless steel
SDR	Banjo fitting, throttle free, angle 90°, Steel