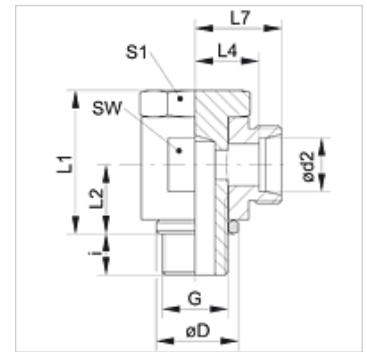


Properties

Connection 1	metric cylindrical outer thread
Sealing form 1	Edge sealing ring
Connection 2	metric cylindrical outer thread
Sealing form 2	24° inner cone
Design	Banjo fitting
Construction	Angle 90°
Standard	DIN 2353 ISO 8434-1
Scope of supply	Socket (without union nut and cutting ring)
Material	Steel
Surface	electro galvanised



Note

Information about fitting, installation, pressure loads and permissible operating temperatures can be found in the technical information for pipe fittings.

Item

Identification	Series	Operating pressure	Ø d2 (mm)	G	Ø D (mm)	i (mm)	L1 (mm)	L2 (mm)	L4 (mm)	L7 (mm)	AF (mm)	S1
XSWM 04 LL	LL	PN 100	4	M 8 x 1	12,5	6	17,0	8	10,5	14,5	12	14
XSWM 05 LL	LL	PN 100	5	M 8 x 1	12,5	6	17,0	10	11,5	17,0	14	14
XSWM 06 LL	LL	PN 100	6	M 10 x 1	14,0	6	21,0	10	10,0	15,5	14	14
XSWM 08 LL	LL	PN 100	8	M 10 x 1	14,0	6	21,0	10	11,0	16,5	14	14
XSWM NW 04 HL 12	L	PN 250	6	M 12 x 1.5	17,0	9	27,5	13	12,5	19,5	17	17

PN = Nominal pressure PB = Max. operating pressure – Series: LL = Very light L = Light S = Heavy – Ø d2 = External pipe diameter

Product versions

XSWM VA	Banjo fitting, angle 90°, Stainless steel
SWM	Banjo fitting, angle 90°, Steel