

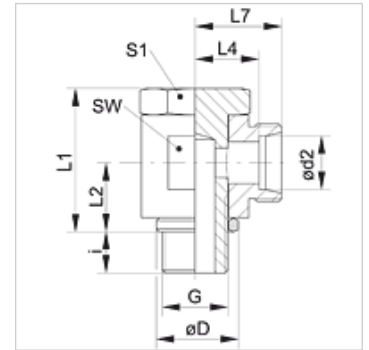
XSWM VA

Banjo fitting, angle 90°



Properties

Connection 1	metric cylindrical outer thread
Sealing form 1	Edge sealing ring
Connection 2	metric cylindrical outer thread
Sealing form 2	24° inner cone
Design	Banjo fitting
Construction	Angle 90°
Standard	DIN 2353 ISO 8434-1
Scope of supply	Socket (without union nut and cutting ring)
Material	Stainless steel



Note

Information about fitting, installation, pressure loads and permissible operating temperatures can be found in the technical information for pipe fittings.

Item

Identification	Series	Operating pressure	Ø d2 (mm)	G	Ø D (mm)	i (mm)	L1 (mm)	L2 (mm)	L4 (mm)	L7 (mm)	AF (mm)	S1
XSWM NW 04 HL VA	L	PN 250	6	M 10 x 1	14,5	6	21,5	10,0	10,5	17,5	14	14
XSWM NW 06 HL VA	L	PN 250	8	M 12 x 1.5	17,5	9	25,0	12,0	12,0	19,0	17	17
XSWM NW 08 HL VA	L	PN 250	10	M 14 x 1.5	19,5	9	27,0	13,0	14,0	21,0	19	19
XSWM NW 10 HL VA	L	PN 250	12	M 16 x 1.5	21,5	9	32,0	15,0	15,5	22,5	22	22
XSWM NW 13 HL VA	L	PN 250	15	M 18 x 1.5	23,5	9	37,5	18,0	17,5	24,5	24	24
XSWM NW 16 HL VA	L	PN 160	18	M 22 x 1.5	27,0	11	44,0	21,5	20,5	28,0	30	27
XSWM NW 20 HL VA	L	PN 160	22	M 26 x 1.5	31,0	12	49,0	24,0	25,5	33,0	36	32
XSWM NW 03 HS VA	S	PN 250	6	M 12 x 1.5	17,5	9	25,0	12,0	14,0	21,0	17	17
XSWM NW 04 HS VA	S	PN 250	8	M 14 x 1.5	19,5	9	27,0	13,0	15,0	22,0	19	19
XSWM NW 06 HS VA	S	PN 250	10	M 16 x 1.5	21,5	9	32,0	15,0	16,0	23,5	22	22
XSWM NW 08 HS VA	S	PN 250	12	M 18 x 1.5	23,5	9	37,0	18,0	17,0	24,5	24	24
XSWM NW 10 HS VA	S	PN 250	14	M 20 x 1.5	25,5	11	37,0	18,0	20,0	28,0	27	27
XSWM NW 13 HS VA	S	PN 160	16	M 22 x 1.5	27,0	11	44,0	22,0	21,5	30,0	30	27
XSWM NW 16 HS VA	S	PN 160	20	M 27 x 2	32,0	13	49,0	24,0	24,5	35,0	36	32

PN = Nominal pressure PB = Max. operating pressure – Series: LL = Very light L = Light S = Heavy – Ø d2 = External pipe diameter

Product versions

XSWM	Banjo fitting, angle 90°, Steel
SWM VA	Banjo fitting, angle 90°, Stainless steel