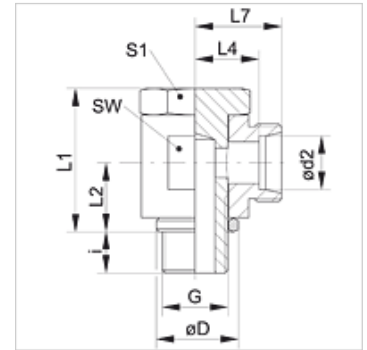


Properties

Connection 1	BSP external thread, cylindrical
Sealing form 1	Edge sealing ring
Connection 2	metric cylindrical outer thread
Sealing form 2	24° inner cone
Design	Banjo fitting
Construction	Angle 90°
Standard	DIN 2353 ISO 8434-1
Scope of supply	Socket (without union nut and cutting ring)
Material	Steel
Surface	electro galvanised



Note

Information about fitting, installation, pressure loads and permissible operating temperatures can be found in the technical information for pipe fittings.

Item

Identification	Series	Operating pressure	Ø d2 (mm)	G	Ø D (mm)	i (mm)	L1 (mm)	L2 (mm)	L4 (mm)	L7 (mm)	AF (mm)	S1
XSWR 04 LL	LL	PN 100	4	G 1/8" -28	14,5	6	21,0	10,0	11,5	15,5	14	14
XSWR 05 LL	LL	PN 100	5	G 1/8" -28	14,5	6	21,5	10,0	10,0	14,5	14	14
XSWR 06 LL	LL	PN 100	6	G 1/8" -28	14,5	6	21,5	10,0	10,0	14,5	14	14
XSWR 08 LL	LL	PN 100	8	G 1/8" -28	14,5	6	21,0	10,0	11,0	16,5	14	14
XSWR NW 13 HL 3/8	L	PN 250	15	G 3/8" -19	22,5	9	37,5	18,0	19,0	26,0	27	22

Series: LL = Very light L = Light S = Heavy – PN = Nominal pressure PB = Max. operating pressure – Ø d2 = External pipe diameter

Product versions

XSWR VA	Banjo fitting, angle 90°, Stainless steel
SWR	Banjo fitting, angle 90°, Steel