

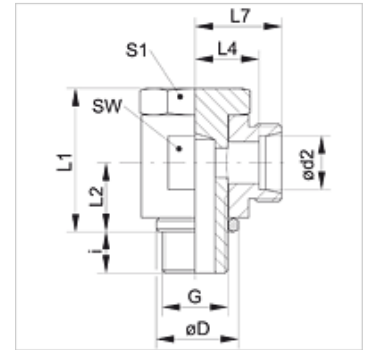
XSWR VA

Banjo fitting, angle 90°



Properties

Connection 1	BSP external thread, cylindrical
Sealing form 1	Edge sealing ring
Connection 2	metric cylindrical outer thread
Sealing form 2	24° inner cone
Design	Banjo fitting
Construction	Angle 90°
Standard	DIN 2353 ISO 8434-1
Scope of supply	Socket (without union nut and cutting ring)
Material	Stainless steel



Note

Information about fitting, installation, pressure loads and permissible operating temperatures can be found in the technical information for pipe fittings.

Item

Identification	Series	Operating pressure	Ø d2 (mm)	G	Ø D (mm)	i (mm)	L1 (mm)	L2 (mm)	L4 (mm)	L7 (mm)	AF (mm)	S1
XSWR NW 04 HL VA	L	PN 250	6	G 1/8" -28	14,5	6	21,0	10,0	10,5	17,5	14	14
XSWR NW 06 HL VA	L	PN 250	8	G 1/4" -19	18,5	9	27,0	13,0	13,0	20,0	19	19
XSWR NW 08 HL VA	L	PN 250	10	G 1/4" -19	18,5	9	27,0	13,0	14,0	21,0	19	19
XSWR NW 10 HL VA	L	PN 250	12	G 3/8" -19	22,5	9	32,0	15,0	15,5	22,5	22	22
XSWR NW 13 HL VA	L	PN 250	15	G 1/2" -14	26,5	11	37,5	18,0	19,0	26,0	27	27
XSWR NW 16 HL VA	L	PN 160	18	G 1/2" -14	26,0	11	44,0	21,5	20,5	28,0	30	27
XSWR NW 20 HL VA	L	PN 160	22	G 3/4" -14	32,0	13	49,0	24,0	25,5	33,0	36	32
XSWR NW 03 HS VA	S	PN 250	6	G 1/4" -19	18,5	9	27,0	13,0	15,0	22,0	19	19
XSWR NW 04 HS VA	S	PN 250	8	G 1/4" -19	18,5	9	27,0	13,0	15,0	22,0	19	19
XSWR NW 06 HS VA	S	PN 250	10	G 3/8" -19	22,5	9	32,0	15,0	16,0	23,5	22	22
XSWR NW 08 HS VA	S	PN 250	12	G 3/8" -19	22,5	9	37,0	18,0	17,0	24,5	24	24
XSWR NW 10 HS VA	S	PN 250	14	G 1/2" -14	26,5	11	37,0	18,0	20,0	28,0	27	27
XSWR NW 13 HS VA	S	PN 250	16	G 1/2" -14	26,0	11	44,0	21,5	21,5	30,0	30	27
XSWR NW 16 HS VA	S	PN 250	20	G 3/4" -14	32,0	13	49,0	24,0	24,5	35,0	36	32

Series: LL = Very light L = Light S = Heavy – PN = Nominal pressure PB = Max. operating pressure – Ø d2 = External pipe diameter

Product versions

XSWR	Banjo fitting, angle 90°, Steel
SWR VA	Banjo fitting, angle 90°, Stainless steel