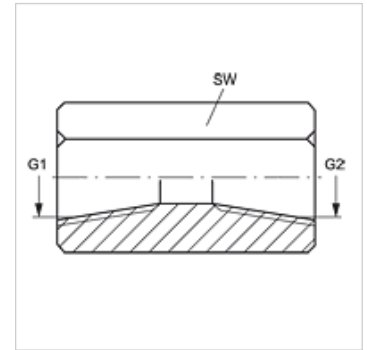


### Properties

<b>Connection 1</b>	NPT internal thread
<b>Sealing form 1</b>	thread seal
<b>Connection 2</b>	NPT internal thread
<b>Sealing form 2</b>	thread seal
<b>Design</b>	Connection sockets
<b>Construction</b>	straight
<b>Material</b>	Steel



### Item

Identification	G1	G2	AF (mm)
<b>G IN 02</b>	1/8" -27 NPT	1/8" -27 NPT	16
<b>G 04 IN 02</b>	1/4" -18 NPT	1/8" -27 NPT	19
<b>G IN 04</b>	1/4" -18 NPT	1/4" -18 NPT	19
<b>G 06 IN 04</b>	3/8" -18 NPT	1/4" -18 NPT	22
<b>G IN 06</b>	3/8" -18 NPT	3/8" -18 NPT	22
<b>G 08 IN 04</b>	1/2" -14 NPT	1/4" -18 NPT	29
<b>G 08 IN 06</b>	1/2" -14 NPT	3/8" -18 NPT	29
<b>G IN 08</b>	1/2" -14 NPT	1/2" -14 NPT	30
<b>G 12 IN 08</b>	3/4" -14 NPT	1/2" -14 NPT	36
<b>G IN 12</b>	3/4" -14 NPT	3/4" -14 NPT	36
<b>G 16 IN 12</b>	1" -11.5 NPT	3/4" -14 NPT	46
<b>G IN 16</b>	1" -11.5 NPT	1" -11.5 NPT	46
<b>G IN 20</b>	1.1/4" -11.5 NPT	1.1/4" -11.5 NPT	51
<b>G IN 24</b>	1.1/2" -11.5 NPT	1.1/2" -11.5 NPT	60
<b>G IN 32</b>	2" -11.5 NPT	2" -11.5 NPT	73

AF = Width across flats

### Product versions

**G IN VA** Connection sockets, Stainless steel