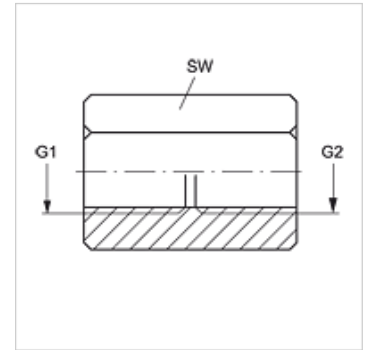
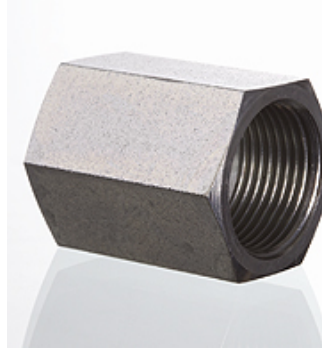


### Properties

<b>Connection 1</b>	BSP cylindrical internal threads
<b>Connection 2</b>	BSP cylindrical internal threads
<b>Design</b>	Connection sockets
<b>Construction</b>	straight
<b>Material</b>	Steel
<b>Surface</b>	electro galvanised



### Item

Identification	G1	G2	AF (mm)
<b>G IR 02</b>	G 1/8" -28	G 1/8" -28	14
<b>G IR 04 IR 02</b>	G 1/4" -19	G 1/8" -28	19
<b>G IR 04</b>	G 1/4" -19	G 1/4" -19	19
<b>G IR 06 IR 04</b>	G 3/8" -19	G 1/4" -19	22
<b>G IR 06</b>	G 3/8" -19	G 3/8" -19	22
<b>G IR 08 IR 04</b>	G 1/2" -14	G 1/4" -19	27
<b>G IR 08 IR 06</b>	G 1/2" -14	G 3/8" -19	27
<b>G IR 08</b>	G 1/2" -14	G 1/2" -14	27
<b>G IR 10 IR 08</b>	G 5/8" -14	G 1/2" -14	30
<b>G IR 10</b>	G 5/8" -14	G 5/8" -14	30
<b>G IR 12</b>	G 3/4" -14	G 3/4" -14	32
<b>G IR 12 IR 08</b>	G 3/4" -14	G 1/2" -14	32
<b>G IR 16 IR 12</b>	G 1" -11	G 3/4" -14	41
<b>G IR 16</b>	G 1" -11	G 1" -11	41
<b>G IR 20 IR 12</b>	G 1.1/4" -11	G 3/4" -14	50
<b>G IR 20 IR 16</b>	G 1.1/4" -11	G 1" -11	50
<b>G IR 20</b>	G 1.1/4" -11	G 1.1/4" -11	50
<b>G IR 24 IR 20</b>	G 1.1/2" -11	G 1.1/4" -11	55
<b>G IR 24</b>	G 1.1/2" -11	G 1.1/2" -11	55
<b>G IR 32 IR 24</b>	G 2" -11	G 1.1/2" -11	70
<b>G IR 32</b>	G 2" -11	G 2" -11	70

AF = Width across flats

### Product versions

**G IR VA** Connection sockets, Stainless steel