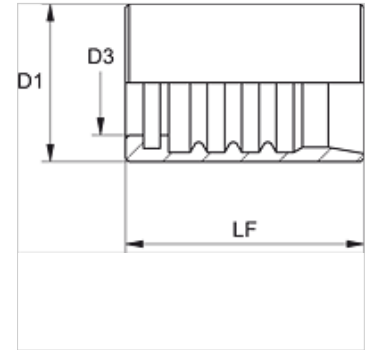
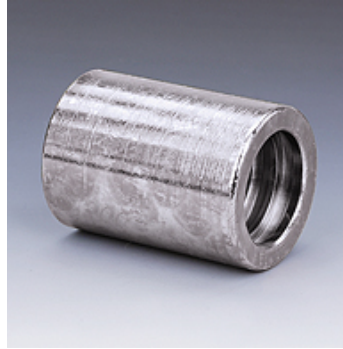


PHY 800 N

Swage ferrule, NY 800

Properties

Ferrule type	Non-skive ferrule
Material	Steel
Surface	electro galvanised



Item

Identification	DN*	Size	Inches	D1 (mm)	D3 (mm)	LF (mm)
PHY 704 N	5	3	3/16"	15,0	9,5	29,0
PHY 806 N	6	4	1/4"	19,0	11,9	31,0
PHY 808 N	8	5	5/16"	21,0	12,7	31,0
PHY 810 N	10	6	3/8"	23,0	14,8	33,0
PHY 713 N	12	8	1/2"	27,0	18,3	37,0

DN = Nominal diameter, nominal width

Product versions

PHY 700 VA Swage ferrule, NY 700, Stainless steel