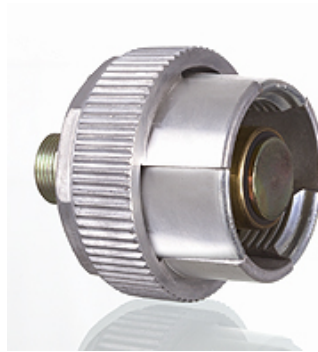


# AKL HL / AKL HS

## Breakaway coupling (loose)

### Properties

<b>Application</b>	Automotive engineering
<b>Connection 1</b>	metric cylindrical outer thread
<b>Sealing form 1</b>	24° inner cone
<b>Residual pressure:</b>	Coupling under residual pressure is possible
<b>Properties</b>	DN 19 + 25 with hand wheel
<b>Mineral oil temp. min.</b>	-40 °C
<b>Mineral oil temp. max.</b>	100 °C
<b>Material</b>	Steel
<b>Surface</b>	electro galvanised



### Description

Quick release couplings uncouple automatically under excessive tensile load, preventing separation of the hose lines.

### Additional information

Flat seal tappets ensure minimal oil leakages and air admittance when coupling.  
The robust construction makes them ideal for use in harsh conditions.

Item	Identification	DN*	Series	for external pipe Ø (mm)	Connecting thread	Size	Coupling thread	Operating pressure (bar)	BD* uncoup. (bar)	SF coup.*
	AKL 06 HL 1	6	L	8	M 14x1,5	1	Rd. 32 x 3	315,0	250	4,0
	AKL 08 HL 1	8	L	10	M 16x1,5	1	Rd. 32 x 3	315,0	250	4,0
	AKL 10 HL 1	10	L	12	M 18x1,5	1	Rd. 32 x 3	315,0	250	4,0
	AKL 13 HL 3	12	L	15	M 22x1,5	3	Rd. 48 x 3	315,0	250	4,0
	AKL 16 HL 3	16	L	18	M 26x1,5	3	Rd. 48 x 3	315,0	250	4,0
	AKL 08 HS 1	8	S	12	M 20x1,5	1	Rd. 32 x 3	315,0	250	4,0
	AKL 10 HS 1	10	S	14	M 22x1,5	1	Rd. 32 x 3	315,0	250	4,0
	AKL 13 HS 3	12	S	16	M 24x1,5	3	Rd. 48 x 3	315,0	250	4,0
	AKL 16 HS 3	16	S	20	M 30x2	3	Rd. 48 x 3	315,0	250	4,0
	AKL 20 HS 5	19	S	25	M 36x2	5	Rd. 60 x 3	160,0	100	4,0
	AKL 25 HS 5	25	S	30	M 42x2	5	Rd. 60 x 3	160,0	100	4,0

DN = Nominal diameter, nominal width – BD uncoup. = Operating pressure uncoupled – SF gek. = Safety factor coupled

### Accessories

AKL ZUB DOSE Dust protection container

### Spare parts

AKL ZUB BLINDSTUTZEN Dummy sockets for breakaway coupling