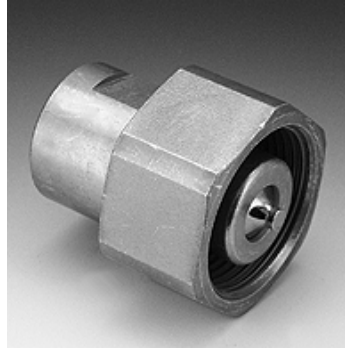


### Properties

<b>Application</b>	General application, e.g. in industry, construction machinery, agricultural technology etc.
<b>Connection 1</b>	metric cylindrical inner thread
<b>Sealing form 1</b>	for screw-in pins with shapes A, B and if necessary E
<b>Residual pressure:</b>	Coupling under residual pressure is possible
<b>compatible with</b>	Aeroquip
<b>Material</b>	Steel
<b>Surface</b>	electro galvanised



### Description

Screw couplings are designed for high pressures and pressure pulses.

### Ordering information

Other pressure and temperature figures available on request.

### Additional information

The robust construction makes them ideal for use in harsh conditions.

### Item

Identification	DN*	Connecting thread	Coupling thread	Operating pressure (bar)	Mineral oil temp. min. (°C)	Mineral oil temp. max. (°C)	SF coup.*
<b>SKL 13 IM AE</b>	12	M 22x1,5	Rd. 35 x 2	350,0	-30	100	4
<b>SKL 16 IM AE</b>	16	M 26x1,5	Rd. 42 x 2	350,0	-30	100	-
<b>SKL 20 IM AE</b>	19	M 30x1,5	Rd. 54 x 3	350,0	-30	100	4
<b>SKL 25 IM AE</b>	25	M 38x1,5	Rd. 64 x 3	350,0	-40	150	-

DN = Nominal diameter, nominal width – SF gek. = Safety factor coupled

### Accessories

<b>SKL ZUBS AE</b>	Dust protection for SKL...AE
--------------------	------------------------------