

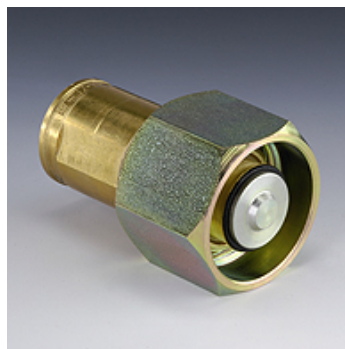
SKL IR F SN78 SK

Screw coupling (loose)

HANSA FLEX

Properties

Application	Industry and automotive engineering
Design	Snap-tite series 78
Connection 1	BSP cylindrical internal threads
Sealing form 1	for screw-in pins with shapes A, B and if necessary E
Residual pressure:	Coupling under residual pressure is possible
Additional feature	Hexagonal design
Material	Brass



Description

Screw couplings are designed for high pressures and pressure pulses.

Additional information

The robust construction makes them ideal for use in harsh conditions.

Item

Identification	DN*	Connecting thread	Operating pressure (bar)	Mineral oil temp. min. (°C)	Mineral oil temp. max. (°C)	SF coup.*
SKL 20 IR F SN78 SK	19	G 3/4" -14	207,0	-40	90	2
SKL 25 IR F SN78 SK	25	G 1" -11	207,0	-40	90	2

DN = Nominal diameter, nominal width – SF gek. = Safety factor coupled