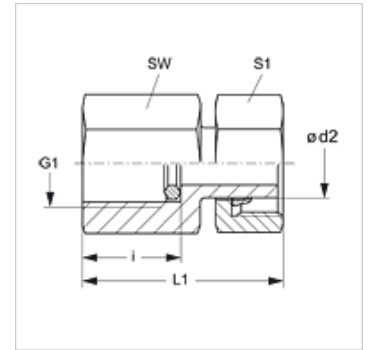


MVE MG

Pressure gauge connection fitting

Properties

Connection 1	BSP cylindrical internal threads
Sealing form 1	Edge sealing ring
Connection 2	metric nut thread
Sealing form 2	Pipe socket with cutting ring
Design	Pressure gauge connection fitting
Scope of supply	with edge sealing ring
Material	Brass



Note

Information about fitting, installation, pressure loads and permissible operating temperatures can be found in the technical information for pipe fittings.

Item

Identification	Series	Ø d2 (mm)	Operating pressure	G1	i (mm)	L1 (mm)	AF (mm)	S1
MVE NW 04 L MG	L	6	PN 400	G 1/4" -19	14,5	38,0	19	14
MVE NW 08 L MG	L	10	PN 400	G 1/4" -19	14,5	39,5	19	19
MVE NW 10 L MG	L	12	PN 400	G 1/4" -19	14,5	40,5	19	22

Series: LL = Very light L = Light S = Heavy – PN = Nominal pressure PB = Max. operating pressure – Ø = External pipe diameter

Product versions

MVE	Pressure gauge connection fitting, Steel
MVE VA	Pressure gauge connection fitting, Stainless steel

Spare parts

DKI	Edge sealing ring for internal thread
------------	---------------------------------------