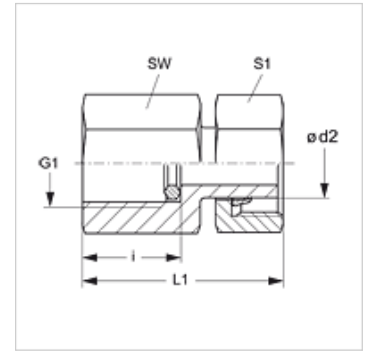


MVE VA

Pressure gauge connection fitting

Properties

| | |
|------------------------|-----------------------------------|
| Connection 1 | BSP cylindrical internal threads |
| Sealing form 1 | Edge sealing ring |
| Connection 2 | metric nut thread |
| Sealing form 2 | Pipe socket with cutting ring |
| Design | Pressure gauge connection fitting |
| Scope of supply | with edge sealing ring |
| Material | Stainless steel |



Note

Information about fitting, installation, pressure loads and permissible operating temperatures can be found in the technical information for pipe fittings.

Item

| Identification | Series | Ø d2 (mm) | Operating pressure | G1 | i (mm) | L1 (mm) | AF (mm) | S1 |
|--------------------|--------|-----------|--------------------|------------|--------|---------|---------|----|
| MVE NW 04 L VA | L | 6 | PN 400 | G 1/4" -19 | 14,5 | 38,0 | 19 | 14 |
| MVE NW 04 L 1/2 VA | L | 6 | PN 315 | G 1/2" -14 | 20,0 | 46,0 | 27 | 14 |
| MVE NW 06 L VA | L | 8 | PN 400 | G 1/4" -19 | 14,5 | 38,0 | 19 | 17 |
| MVE NW 06 L 1/2 VA | L | 8 | PN 315 | G 1/2" -14 | 20,0 | 46,0 | 27 | 17 |
| MVE NW 08 L VA | L | 10 | PN 400 | G 1/4" -19 | 14,5 | 39,5 | 19 | 19 |
| MVE NW 08 L 1/2 VA | L | 10 | PN 315 | G 1/2" -14 | 20,0 | 47,0 | 27 | 19 |
| MVE NW 10 L VA | L | 12 | PN 400 | G 1/4" -19 | 14,5 | 40,5 | 19 | 22 |
| MVE NW 10 L 1/2 VA | L | 12 | PN 315 | G 1/2" -14 | 20,0 | 48,0 | 27 | 22 |
| MVE NW 03 S 1/4 VA | S | 6 | PN 630 | G 1/4" -19 | 14,5 | 40,0 | 19 | 17 |
| MVE NW 03 S VA | S | 6 | PN 630 | G 1/2" -14 | 20,0 | 45,0 | 27 | 17 |
| MVE NW 04 S 1/4 VA | S | 8 | PN 630 | G 1/4" -19 | 14,5 | 40,0 | 19 | 19 |
| MVE NW 04 S VA | S | 8 | PN 630 | G 1/2" -14 | 20,0 | 45,0 | 27 | 19 |
| MVE NW 06 S 1/4 VA | S | 10 | PN 630 | G 1/4" -19 | 14,5 | 40,0 | 19 | 22 |
| MVE NW 06 S VA | S | 10 | PN 630 | G 1/2" -14 | 20,0 | 47,0 | 27 | 22 |
| MVE NW 08 S 1/4 VA | S | 12 | PN 630 | G 1/4" -19 | 14,5 | 40,0 | 19 | 24 |
| MVE NW 08 S VA | S | 12 | PN 630 | G 1/2" -14 | 20,0 | 47,5 | 27 | 24 |

Series: LL = Very light L = Light S = Heavy – Ø = External pipe diameter – PN = Nominal pressure PB = Max. operating pressure

Product versions

| | |
|---------|--|
| MVE | Pressure gauge connection fitting, Steel |
| MVE MG | Pressure gauge connection fitting, Brass |
| XMVE VA | Pressure gauge connection fitting, Stainless steel |

Spare parts

| | |
|--------|---------------------------------------|
| DKI VA | Edge sealing ring for internal thread |
|--------|---------------------------------------|