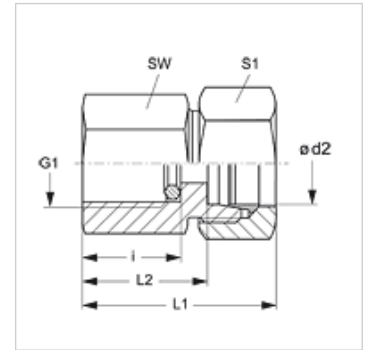
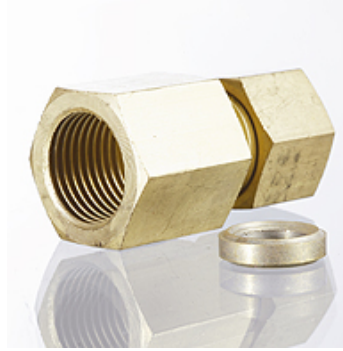


# MVR MG

## Pressure gauge connection fitting

### Properties

<b>Connection 1</b>	BSP cylindrical internal threads
<b>Sealing form 1</b>	Edge sealing ring
<b>Connection 2</b>	metric cylindrical outer thread
<b>Sealing form 2</b>	24° inner cone
<b>Design</b>	Pressure gauge connection fitting
<b>Scope of supply</b>	with edge sealing ring
<b>Material</b>	Brass



### Item

Identification	Series	Ø d2 (mm)	Operating pressure	G1	i (mm)	L1 (mm)	L2 (mm)	AF (mm)	S1
<b>MVR NW 04 HL MG</b>	L	6	PN 315	G 1/4" -19	14,5	37	22,0	19	14
<b>MVR NW 06 HL MG</b>	L	8	PN 315	G 1/4" -19	14,5	37	22,0	19	17
<b>MVR NW 08 HL MG</b>	L	10	PN 315	G 1/4" -19	14,5	38	23,0	19	19
<b>MVR NW 10 HL MG</b>	L	12	PN 315	G 1/4" -19	14,5	38	23,0	19	22
<b>MVR NW 03 HS MG</b>	S	6	PN 630	G 1/2" -14	20,0	46	31,0	27	17
<b>MVR NW 04 HS MG</b>	S	8	PN 630	G 1/2" -14	20,0	46	31,0	27	19
<b>MVR NW 06 HS MG</b>	S	10	PN 630	G 1/2" -14	20,0	47	30,5	27	22
<b>MVR NW 08 HS MG</b>	S	12	PN 630	G 1/2" -14	20,0	47	30,5	27	24

Series: LL = Very light L = Light S = Heavy - PN = Nominal pressure PB = Max. operating pressure - Ø = External pipe diameter

### Product versions

<b>MVR</b>	Pressure gauge connection fitting, Steel
<b>MVR VA</b>	Pressure gauge connection fitting, Stainless steel

### Spare parts

<b>DKI</b>	Edge sealing ring for internal thread
------------	---------------------------------------