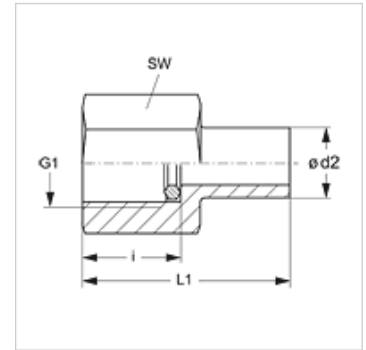
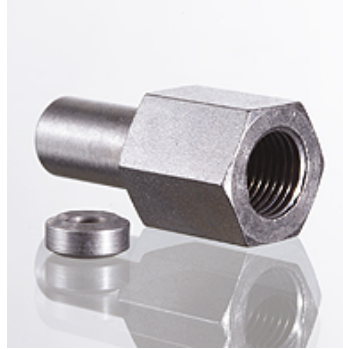


### Properties

<b>Connection 1</b>	BSP cylindrical internal threads
<b>Sealing form 1</b>	Edge sealing ring
<b>Connection 2</b>	Pipe socket not pre-assembled
<b>Sealing form 2</b>	Pipe socket with cutting ring
<b>Design</b>	Pressure gauge connection fitting
<b>Scope of supply</b>	with edge sealing ring (socket without union nut and cutting ring)
<b>Material</b>	Steel
<b>Surface</b>	electro galvanised



### Note

Information about fitting, installation, pressure loads and permissible operating temperatures can be found in the technical information for pipe fittings.

### Item

Identification	Series	Ø d2 (mm)	Operating pressure	G1	i (mm)	L1 (mm)	AF (mm)
XMVE NW 04 L	L	6	PN 400	G 1/4" -19	14,5	38,0	19
XMVE NW 06 L	L	8	PN 400	G 1/4" -19	14,5	38,0	19
XMVE NW 08 L	L	10	PN 400	G 1/4" -19	14,5	39,5	19
XMVE NW 10 L	L	12	PN 400	G 1/4" -19	14,5	40,5	19
XMVE NW 03 S	S	6	PN 630	G 1/2" -14	20,0	45,0	27
XMVE NW 04 S	S	8	PN 630	G 1/2" -14	20,0	45,0	27
XMVE NW 06 S	S	10	PN 630	G 1/2" -14	20,0	47,0	27
XMVE NW 08 S	S	12	PN 630	G 1/2" -14	20,0	47,5	27

Series: LL = Very light L = Light S = Heavy – PN = Nominal pressure PB = Max. operating pressure – Ø = External pipe diameter

### Product versions

XMVE VA	Pressure gauge connection fitting, Stainless steel
MVE	Pressure gauge connection fitting, Steel

### Spare parts

DKI	Edge sealing ring for internal thread
-----	---------------------------------------