

LKS IR

Plug-in coupling connector (air)

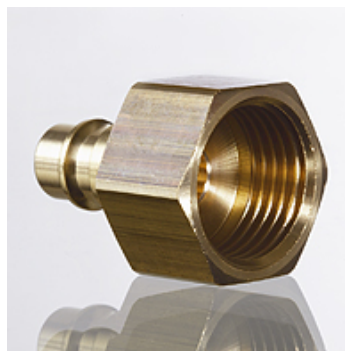
Properties

Design Quick release coupling plug

Connection 1 BSP cylindrical internal threads

Connection 2 Connector Ø 7.2 mm

Material Brass



Item			
Identification	Connecting thread	Operating pressure	AF (mm)
LKS 02 IR	G 1/8" -28	PN 35	13
LKS 06 IR	G 1/4" -19	PN 35	17
LKS 10 IR	G 3/8" -19	PN 35	19
LKS 13 IR	G 1/2" -14	PN 35	24

AF = Width across flats