

LKS IR C

Plug-in coupling connector (air)

Properties

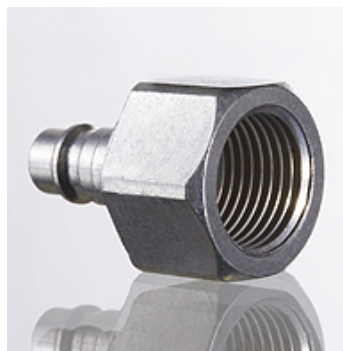
Design Quick release coupling plug

Connection 1 BSP cylindrical internal threads

Connection 2 Connector Ø 7.6 mm

Material Steel

Surface electro galvanised



Item

Identification	Connecting thread	Operating pressure
LKS 04 IR C	G 1/8" -28	PN 16
LKS 06 IR C	G 1/4" -19	PN 16
LKS 10 IR C	G 3/8" -19	PN 16
LKS 13 IR C	G 1/2" -14	PN 16