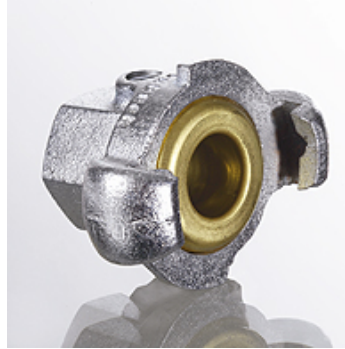


LSK IR M

Claw coupling (air)

Properties

Design	Claw inner thread coupling
Construction type	with safety double cam
Connection 1	BSP cylindrical internal threads
Connection 2	Claw coupling
Sealing form 2	Brass seal with rubber insert
Temp. min.	-40 °C
Temp. max.	95 °C
Material	Cast iron
Surface	electro galvanised



Note

A coupling with rubber seal must be used as the counter coupling.

Item

Identification	Connecting thread	Cog space (mm)	Operating pressure
LSK NW 13 IR M	G 1/2" -14	42	PN 10
LSK NW 20 IR M	G 3/4" -14	42	PN 10
LSK NW 25 IR M	G 1" -11	42	PN 10

Spare parts

LSK HOOS	Retaining screw for claw coupling
LSK MOOH	Brass sleeve for claw coupling
LSK SOOR	Hose ring for claw coupling