

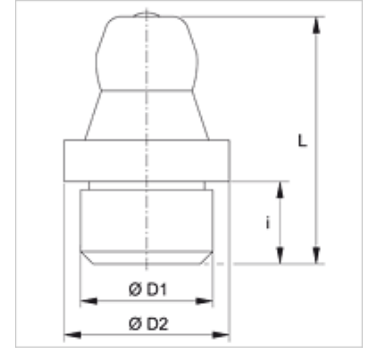
SNK GLATT

Conical lubricating nipple, drive type shank

HANSA FLEX

Properties

Connection 1	Drive type shank
Connection 2	Lubricating nipple
Design	Hydraulic-type lubricating nipple
Construction type	for driving in with smooth pin
Construction	straight
Standard	DIN 71412
Additional feature	Lubricating nipple head diameter 6,5 mm
Material	Steel
Surface	electro galvanised



Item

Identification	Ø D1 (mm)	Ø D2 (mm)	i (mm)	L (mm)
SNK GLATT 06	6	8,0	5,5	15
SNK GLATT 08	8	10,0	5,5	15