

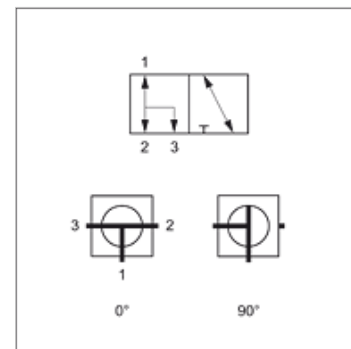
3 BKR TK VZ

3-way ball valve in block design

HANSA FLEX

Properties

Connection 1 - 3	BSP cylindrical internal threads
Sealing form 1 - 3	for screw-in pins with shapes A, B and if necessary E.
Construction	Compact construction
Bore	T shaped
Contact travel	0°; 90°
Temp. min.	-10 °C
Temp. max.	80 °C
Material	Steel housing, ball and operating shaft POM ball seal NBR O-ring
Surface	electro galvanised



Note

Please refer to the operating instructions for ball valves.
Note the permissible pressure limits for the connecting elements.

Item

Identification	DN*	Connecting thread	Overlap	LW (mm)	Operating pressure	AF (mm)	SF*
3 BKR 04 TK VZ	4	G 1/8" -28	negative (open)	5,0	PN 400	9	1,5
3 BKR 06 TK VZ	6	G 1/4" -19	negative (open)	6,0	PN 400	9	1,5
3 BKR 10 TK VZ	10	G 3/8" -19	negative (open)	9,0	PN 400	9	1,5
3 BKR 13 TK VZ	12	G 1/2" -14	negative (open)	11,5	PN 350	9	1,5

DN = Nominal diameter, nominal width – LW = Clearance – PN = Nominal pressure PB = Max. operating pressure – AF = Width across flats – SF = Safety factor

Product versions

3 BKR TK 3-way ball valve in block design, burnished