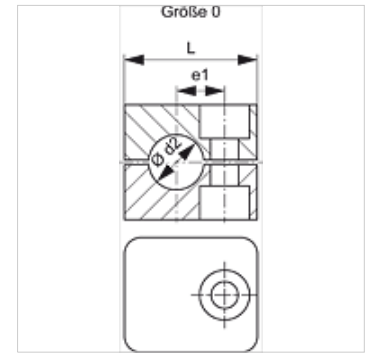


SRS 0 PA

Pipe clamp, light series

Properties

Design	Pipe clamp
Construction type	Inside of clamp with web
Series	light
Standard	DIN 3015-1
Temp. min.	-40 °C
Temp. max.	120 °C
Material	Polyamide 6



Description

Webs in the inner surface of the clamps dampen impacts and vibrations and absorb forces along the pipe axis. A gap between the two halves pretensions the pipe.

Ordering information

1 piece = 2 halves of clamp

Item

Identification	External pipe Ø d2 (mm)	External pipe Ø d2	Clamp size	e1 (mm)	H (mm)	L (mm)	S1 (mm)
SRS 0106 PA	6,0	-	0	10	27	28	0,6
SRS 0106.4 PA	6,4	1/4"	0	10	27	28	0,6
SRS 0108 PA	8,0	5/16"	0	10	27	28	0,6
SRS 0109.5 PA	9,5	3/8"	0	10	27	28	0,6
SRS 0110 PA	10,0	-	0	10	27	28	0,6
SRS 0112 PA	12,0	-	0	10	27	28	0,6

Product versions

SRS 0 PP Pipe clamp, light series, Polypropylene