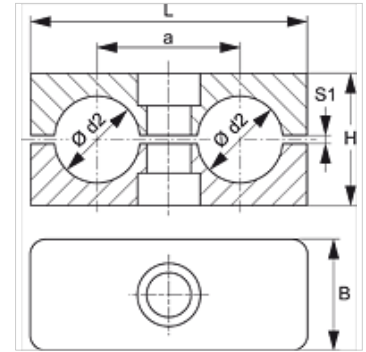


SRS 1-5 D PA

Pipe clamp, double pipes

Properties

Design	Double pipe clamp
Construction type	Inside of clamp with web
Standard	DIN 3015-3
Temp. min.	-40 °C
Temp. max.	120 °C
Material	Polyamide 6



Note

The use of clamps with a smooth inner surface is recommended for retaining hoses and cables. No pretension is applied when fitting and the block height H is reduced to the gap width S1.

Description

Webs in the inner surface of the clamps dampen impacts and vibrations and absorb forces along the pipe axis. A gap between the two halves pretensions the pipe.

Ordering information

1 piece = 2 halves of clamp

Item

Identification	Clamp size	External pipe Ø d2 (mm)	External pipe Ø d2	a (mm)	B (mm)	H (mm)	L (mm)	S1 (mm)
SRS 106.4 D PA	1	6,4	1/4"	20	30	27	36	1,0
SRS 106 D PA	1	6,0	-	20	30	27	36	1,0
SRS 108 D PA	1	8,0	5/16"	20	30	27	36	1,0
SRS 109.5 D PA	1	9,5	3/8"	20	30	27	36	1,0
SRS 110 D PA	1	10,0	-	20	30	27	36	1,0
SRS 112 D PA	1	12,0	-	20	30	27	36	1,0
SRS 212.7 D PA	2	12,7	1/2"	29	30	26	53	1,2
SRS 213.5 D PA	2	13,5	-	29	30	26	53	1,2
SRS 214 D PA	2	14,0	-	29	30	26	53	1,2
SRS 215 D PA	2	15,0	-	29	30	26	53	1,2
SRS 216 D PA	2	16,0	5/8"	29	30	26	53	1,2
SRS 217.2 D PA	2	17,2	-	29	30	26	53	1,2
SRS 218 D PA	2	18,0	-	29	30	26	53	1,2
SRS 319 D PA	3	19,0	3/4"	36	30	37	67	1,6
SRS 320 D PA	3	20,0	-	36	30	37	67	1,6
SRS 321.3 D PA	3	21,3	-	36	30	37	67	1,6
SRS 322 D PA	3	22,0	-	36	30	37	67	1,6
SRS 325 D PA	3	25,0	1"	36	30	37	67	1,6
SRS 426.9 D PA	4	26,9	-	45	30	42	82	2,0
SRS 428 D PA	4	28,0	-	45	30	42	82	2,0
SRS 430 D PA	4	30,0	-	45	30	42	82	2,0
SRS 532 D PA	5	32,0	1.1/4"	56	30	54	106	2,0
SRS 533.7 D PA	5	33,7	-	56	30	54	106	2,0
SRS 535 D PA	5	35,0	-	56	30	54	106	2,0
SRS 538 D PA	5	38,0	1.1/2"	56	30	54	106	2,0
SRS 542 D PA	5	42,0	-	56	30	54	106	2,0

Product versions

SRS 1-5 D PP	Pipe clamp, double pipes, Inside of clamp with web
SRS 1-5 D PP G	Pipe clamp, double pipes, Inside of clamp, smooth
SRS 1-5 D VG	Pipe clamp, double pipes, Inside of clamp, smooth