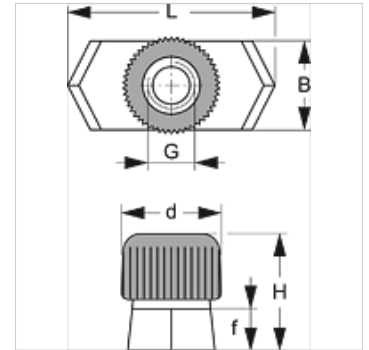


SRS SM

Mounting rail nut

Properties

| | |
|-----------------|---------------------------------|
| Design | for single and twin pipe clamps |
| Series | light |
| Standard | DIN 3015-1 |
| Material | Steel and rubber |
| Surface | electro galvanised |



Description

for all clamp sizes from light series and clamp size 1 of the double pipe clamp.

Item

| Identification | Clamp size | B (mm) | d (mm) | f (mm) | G | H (mm) | L (mm) |
|----------------|------------|-----------|-----------|-----------|-----|-----------|-----------|
| SRS SM | 0 - 6 | 10,4 | 12 | 5 | M 6 | 14,5 | 25,4 |

Product versions

SRS SM V4 Mounting rail nut, Stainless steel 1.4571

Additional element for following products

| | |
|-------|------------------------------|
| A 1-6 | Configuration of group A 1-6 |
| A 0 | Configuration of group A 0 |