

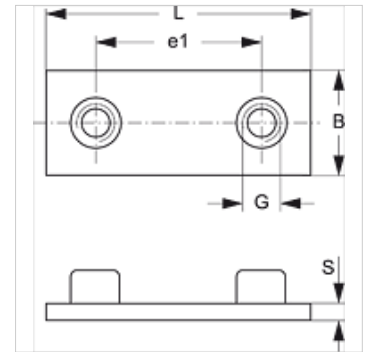
# SRS SP 30-100

Welded on base plate for single pipe clamp



## Properties

<b>Design</b>	for single pipe clamps
<b>Series</b>	heavy
<b>Standard</b>	DIN 3015-2
<b>Material</b>	Steel
<b>Surface</b>	phosphate treated



Item						
Identification	Clamp size	B (mm)	e1 (mm)	G	L (mm)	S (mm)
SRS SP 30	1	30	33	M 10	73	8
SRS SP 40	2	30	45	M 10	84	8
SRS SP 50	3	30	60	M 10	100	8
SRS SP 60	4	45	90	M 12	140	10
SRS SP 70	5	60	122	M 16	180	10
SRS SP 80	6	80	168	M 20	225	15
SRS SP 90	7	90	205	M 24	270	15
SRS SP 100	8	120	265	M 30	340	25

## Product versions

<b>SRS SP 30-100 V4</b>	Welded on base plate for single pipe clamp, Stainless steel 1.4571
<b>SRS SP 30-100 VZ</b>	Welded on base plate for single pipe clamp, electro galvanised

## Additional element for following products

<b>C</b>	Configuration of group C
----------	--------------------------