

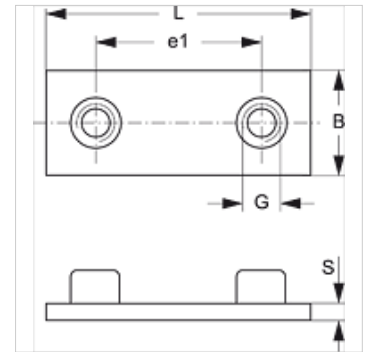
# SRS SP 30-100 V4

Welded on base plate for single pipe clamp

**HANSA FLEX**

## Properties

<b>Design</b>	for single pipe clamps
<b>Series</b>	heavy
<b>Standard</b>	DIN 3015-2
<b>Material</b>	Stainless steel 1.4571



## Item

Identification	Clamp size	B (mm)	e1 (mm)	G	L (mm)	S (mm)
SRS SP 30 V4	1	30	33	M 10	73	8
SRS SP 40 V4	2	30	45	M 10	84	8
SRS SP 50 V4	3	30	60	M 10	100	8
SRS SP 60 V4	4	45	90	M 12	140	10
SRS SP 70 V4	5	60	122	M 16	180	10
SRS SP 80 V4	6	80	168	M 20	225	15

## Product versions

SRS SP 30-100	Welded on base plate for single pipe clamp, phosphate treated
SRS SP 30-100 VZ	Welded on base plate for single pipe clamp, electro galvanised