

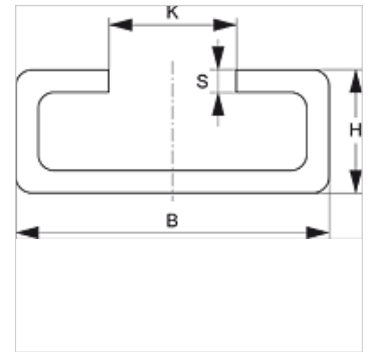
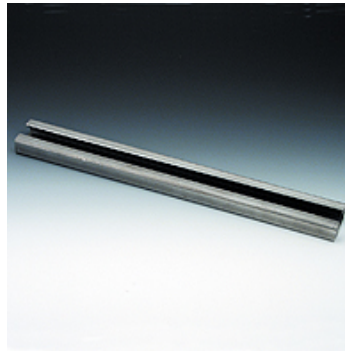
SRS TS 40 V4

Mounting rail, single pipe clamp

HANSA FLEX

Properties

Design	for single pipe clamps
Series	heavy
Standard	DIN 3015-2
Material	Stainless steel 1.4571



Description

for clamp sizes 1-4 from heavy series.

Item

Identification	B (mm)	H (mm)	K (mm)	S (mm)	Length (m)
SRS TS 40-1 V4	40	22	12,5	5	1,00
SRS TS 40-2 V4	40	22	12,5	5	2,00

Product versions

SRS TS 40	Mounting rail, single pipe clamp, Steel (bright)
SRS TS 40 VZ	Mounting rail, single pipe clamp, electro galvanised