

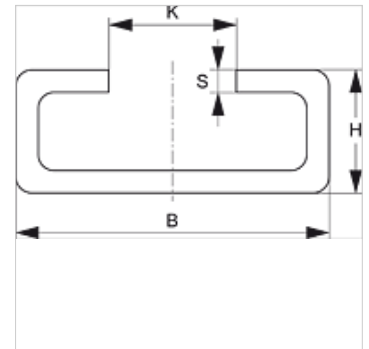
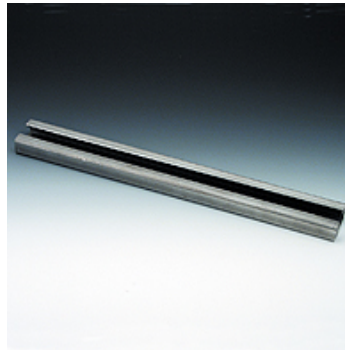
SRS TS 40 VZ

Mounting rail, single pipe clamp



Properties

Design	for single pipe clamps
Series	heavy
Standard	DIN 3015
Material	Steel
Surface	electro galvanised



Description

for clamp sizes 1-4 from heavy series.

Item

Identification	B (mm)	H (mm)	K (mm)	S (mm)	Length (m)
SRS TS 40-1 VZ	40	22	12,5	5	1,00
SRS TS 40-2 VZ	40	22	12,5	5	2,00

Product versions

SRS TS 40	Mounting rail, single pipe clamp, Steel (bright)
SRS TS 40 V4	Mounting rail, single pipe clamp, Stainless steel 1.4571