

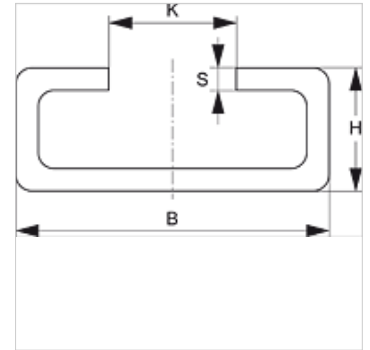
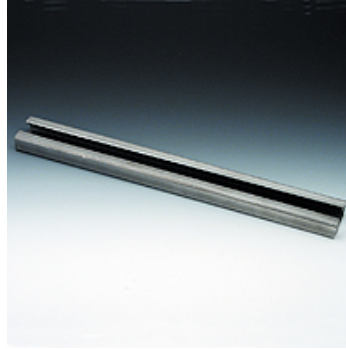
SRS TS V4

Mounting rail, single and double pipe clamp

HANSA FLEX

Properties

Design	for single and twin pipe clamps
Series	light
Standard	DIN 3015
Material	Stainless steel 1.4571



Description

for all clamp sizes from light series and the double pipe clamp.

Item

Identification	B (mm)	H (mm)	K (mm)	S (mm)	Length (m)
SRS TS 11-1 V4	28	11	11,4	2	1,00
SRS TS 11-2 V4	28	11	11,4	2	2,00
SRS TS 14-1 V4	28	14	11,4	2	1,00
SRS TS 14-2 V4	28	14	11,4	2	2,00

Product versions

SRS TS	Mounting rail, single and double pipe clamp, Steel (bright)
SRS TS VZ	Mounting rail, single and double pipe clamp, electro galvanised