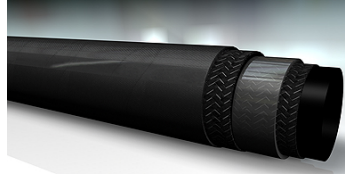


DAMPF G

Steam hose

Properties

Application	Hot water or saturated steam applications
Special features	high temperature, abrasion and ozone resistance
Inner layer	EPDM
Insert	two Textile insert wound
Outer layer	NBR
Operating pressure	saturated steam max. 6 bar hot water max. 18 bar
Colour	black
Temp. range	+164°C (saturated steam); +95°C (hot water)
Media	Hot water Steam



Note

Please observe the guidelines of BG CHEMIE T002; Hose lines - safe application / 6.3.3 Additional notes for the use of hose lines for steam and hot water.

Bleed water or steam after use.

Item

Identification	Internal Ø (mm)	External Ø (mm)	Wall thickness (mm)	Operating pressure (bar)	Min. bending radius (mm)	Roll length (m)
DAMPF 13-5 G	13	23	5	6,0	80	40
DAMPF 16-5 G	16	26	5	6,0	95	40
DAMPF 19-6 G	19	31	6	6,0	115	40
DAMPF 25-6 G	25	37	6	6,0	150	40
DAMPF 32-7 G	32	46	7	6,0	195	40
DAMPF 38-7 G	38	52	7	6,0	230	40
DAMPF 51-8 G	51	67	8	6,0	300	40