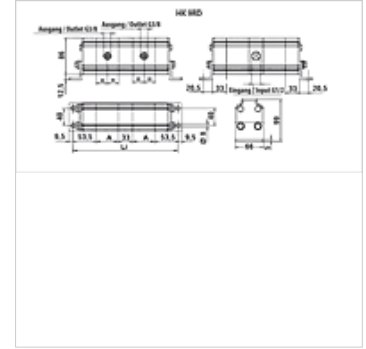
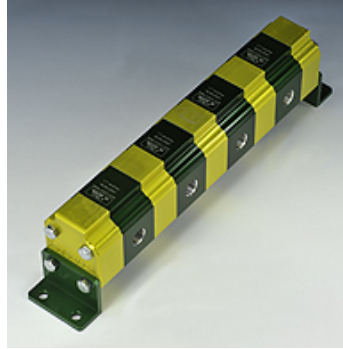


HK 9RD 04 BG1

Gear flow divider, size 1 9RD 4-way

Properties

Design	without central phase compensation valves internal leak oil discharge
Rotational speed range	1200 - 2700 U/min
Pressure difference	max. 30 bar (between the sections)
Recommended speed	1800 - 2000 rpm



Note

Before commissioning the system, the first running-in of the gear flow divider should be under no load.

-
Diagrams and circuit diagrams essentially valid as schematic diagrams also for 4-way flow dividers.

Description

This flow divider is used to supply four independent hydraulic circuits with just one pump

Division error approx. 3%

Configuration of gear flow dividers: $q_i = Q/z * 1000/n$

q_i = displacement/section [cm³]; Q = total intake volumetric flow [l/min]; z = no. of sections; n = rotating speed [rpm]

Item

Identification	Intake volume per section (cc)	p1 max. (bar)	p2 max. (bar)	Flow per element min. (L/min)	Flow per element max. (L/min)	Flow per element (L/min)	A (mm)	Li (mm)	Weight (kg)
HK 9RD 04 18	1,70	220	270	2,00	9,50	4,00	44	382	4,45
HK 9RD 04 20	2,20	220	270	2,50	13,00	5,00	46	390	4,50
HK 9RD 04 21	2,60	220	270	3,00	16,00	6,00	48	398	4,65
HK 9RD 04 23	3,20	220	270	3,50	19,00	7,00	50	406	4,80
HK 9RD 04 25	3,80	200	240	4,50	22,50	8,00	52	414	6,00

p1 = max. working pressure – p2 = max. peak pressure