

HK BMM

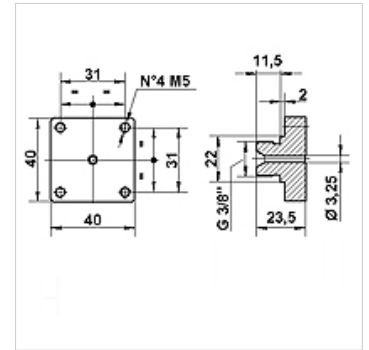
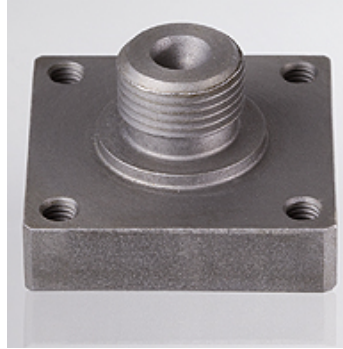
BMM adapter for MAP pressure switch

Properties

Connection G 3/8" male thread

Material Steel

Use for mounting of pressure switches with mit 4-hole Flange 31x31 mm



Item

| Identification | Weight (kg) |
|----------------|-------------|
| HK BMM 10 | 0,3 |

Accessory for following products

| | |
|--------|---------------------|
| HK MAP | MAP pressure switch |
|--------|---------------------|