

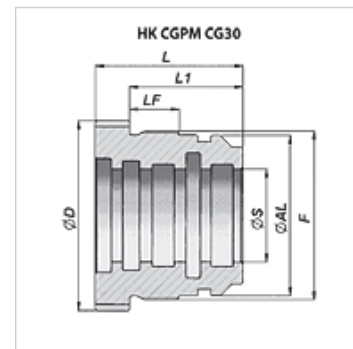
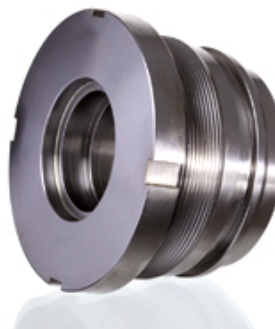
# HK CGPM / CG30

Guide housing for double-acting hydraulic cylinders 250 bar

**HANSA FLEX**

## Properties

Material Steel C40



| Item                |          |          |          |           |        |         |         |             |                   |
|---------------------|----------|----------|----------|-----------|--------|---------|---------|-------------|-------------------|
| Identification      | Ø A (mm) | Ø D (mm) | Ø S (mm) | F         | L (mm) | L1 (mm) | LF (mm) | Weight (kg) | matching seal kit |
| HK CGPM 065 050 025 | 50       | 64       | 25       | M 54x1.5  | 55     | 45      | 22      | 0,66        | HK GKG PM 050 025 |
| HK CGPM 065 050 030 | 50       | 64       | 30       | M 54x1.5  | 55     | 45      | 22      | 0,55        | HK GKG PM 050 030 |
| HK CGPM 065 050 035 | 50       | 64       | 35       | M 54x1.5  | 55     | 45      | 22      | 0,41        | HK GKG PM 050 035 |
| HK CGPM 075 060 030 | 60       | 74       | 30       | M 64x1.5  | 60     | 48      | 22      | 0,99        | HK GKG PM 060 030 |
| HK CGPM 075 060 035 | 60       | 74       | 35       | M 64x1.5  | 60     | 48      | 22      | 0,86        | HK GKG PM 060 035 |
| HK CGPM 075 060 040 | 60       | 74       | 40       | M 64x1.5  | 60     | 48      | 22      | 0,70        | HK GKG PM 060 040 |
| HK CGPM 080 063 035 | 63       | 78       | 35       | M 68x1.5  | 60     | 48      | 22      | 1,04        | On request        |
| HK CGPM 080 063 040 | 63       | 78       | 40       | M 68x1.5  | 60     | 48      | 22      | 0,88        | On request        |
| HK CGPM 085 070 035 | 70       | 84       | 35       | M 74x1.5  | 65     | 50      | 22      | 1,48        | On request        |
| HK CGPM 085 070 040 | 70       | 85       | 40       | M 74x1.5  | 65     | 50      | 22      | 1,27        | HK GKG PM 070 040 |
| HK CGPM 100 080 040 | 80       | 94       | 40       | M 85x2    | 75     | 60      | 25      | 2,18        | On request        |
| HK CGPM 100 080 045 | 80       | 94       | 45       | M 85x2    | 75     | 60      | 25      | 1,95        | HK GKG PM 080 045 |
| HK CGPM 100 080 050 | 80       | 95       | 50       | M 85x2    | 75     | 60      | 25      | 1,70        | HK GKG PM 080 050 |
| HK CGPM 110 090 045 | 90       | 110      | 45       | M 95x2    | 75     | 60      | 25      | 2,80        | HK GKG PM 090 045 |
| HK CGPM 110 090 050 | 90       | 110      | 50       | M 95x2    | 75     | 60      | 25      | 2,57        | HK GKG PM 090 050 |
| HK CGPM 110 090 060 | 90       | 110      | 60       | M 95x2    | 75     | 60      | 25      | 2,00        | HK GKG PM 090 060 |
| HK CGPM 120 100 045 | 100      | 120      | 45       | M 105x2   | 75     | 60      | 25      | 3,80        | HK GKG PM 100 045 |
| HK CGPM 120 100 050 | 100      | 120      | 50       | M 105x2   | 75     | 60      | 25      | 3,45        | HK GKG PM 100 050 |
| HK CGPM 120 100 060 | 100      | 120      | 60       | M 105x2   | 75     | 60      | 25      | 2,90        | HK GKG PM 100 060 |
| HK CGPM 130 110 050 | 110      | 130      | 50       | M 115x2   | 85     | 70      | 30      | 5,00        | HK GKG PM 110 050 |
| HK CGPM 130 110 060 | 110      | 130      | 60       | M 115x2   | 85     | 70      | 30      | 4,42        | HK GKG PM 110 060 |
| HK CGPM 140 120 060 | 120      | 140      | 60       | M 125x2   | 85     | 70      | 30      | 5,70        | HK GKG PM 120 060 |
| HK CGPM 140 120 070 | 120      | 140      | 70       | M 125x2   | 85     | 70      | 30      | 4,90        | HK GKG PM 120 070 |
| HK CGPM 140 120 080 | 120      | 140      | 80       | M 125x2   | 85     | 70      | 30      | 3,96        | HK GKG PM 120 080 |
| HK CGPM 145 125 070 | 125      | 144      | 70       | M 130x2   | 90     | 75      | 40      | 5,99        | HK GKG PM 125 070 |
| HK CGPM 145 125 080 | 125      | 144      | 80       | M 130x2   | 90     | 75      | 40      | 4,95        | HK GKG PM 125 080 |
| HK CGPM 160 140 080 | 140      | 160      | 80       | M 145x2   | 90     | 75      | 40      | 7,20        | HK GKG PM 140 080 |
| HK CGPM 160 140 090 | 140      | 159      | 90       | M 145x2   | 90     | 75      | 40      | 6,21        | HK GKG PM 140 090 |
| HK CGPM 160 140 100 | 140      | 160      | 100      | M 145x2   | 90     | 75      | 40      | 5,00        | HK GKG PM 140 100 |
| HK CGPM 170 150 080 | 150      | 169      | 80       | M 155x2   | 100    | 85      | 46      | 9,85        | HK GKG PM 150 080 |
| HK CGPM 170 150 090 | 150      | 169      | 90       | M 155x2   | 100    | 85      | 46      | 8,73        | HK GKG PM 150 090 |
| HK CGPM 170 150 100 | 150      | 169      | 100      | M 155x2   | 100    | 85      | 46      | 7,49        | HK GKG PM 150 100 |
| HK CGPM 180 160 100 | 160      | 180      | 100      | M 165x2   | 100    | 85      | 46      | 9,40        | HK GKG PM 160 100 |
| HK CGPM 180 160 120 | 160      | 180      | 120      | M 165x2   | 100    | 85      | 46      | 6,40        | HK GKG PM 160 120 |
| HK CG 30 180 100    | 180      | 210      | 100      | M 188x2.5 | 110    | 92      | 58      | 15,80       | On request        |
| HK CGPM 215 180 100 | 180      | 215      | 100      | M 188x2.5 | 125    | 107     | 60      | 18,10       | HK GKG PM 180 100 |
| HK CGPM 215 180 120 | 180      | 215      | 120      | M 188x2.5 | 125    | 107     | 60      | 14,35       | HK GKG PM 180 120 |
| HK CG 30 200 100    | 200      | 218      | 100      | M 208x2.5 | 110    | 92      | 58      | 20,60       | On request        |
| HK CGPM 225 200 100 | 200      | 225      | 100      | M 208x2.5 | 125    | 107     | 60      | 23,61       | HK GKG PM 200 100 |
| HK CGPM 225 200 120 | 200      | 225      | 120      | M 208x2.5 | 125    | 107     | 60      | 19,90       | HK GKG PM 200 120 |
| HK CGPM 225 200 140 | 200      | 225      | 140      | M 208x2.5 | 125    | 107     | 60      | 16,03       | HK GKG PM 200 140 |
| HK CGPM 245 220 120 | 220      | 245      | 120      | M 228x2.5 | 130    | 112     | 65      | 27,82       | HK GKG PM 220 120 |
| HK CGPM 245 220 140 | 220      | 245      | 140      | M 228x2.5 | 130    | 112     | 65      | 23,80       | HK GKG PM 220 140 |
| HK CG 30 250 120    | 250      | 268      | 120      | M 258x2.5 | 135    | 117     | 80      | 40,00       | On request        |
| HK CGPM 275 250 150 | 250      | 275      | 150      | M 258x2.5 | 150    | 130     | 80      | 37,42       | HK GKG PM 250 150 |
| HK CGPM 275 250 180 | 250      | 275      | 180      | M 258x2.5 | 150    | 130     | 80      | 27,73       | HK GKG PM 250 180 |
| HK CGPM 335 300 150 | 300      | 335      | 150      | M 308x3   | 180    | 155     | 95      | 77,10       | HK GKG PM 300 150 |
| HK CGPM 335 300 180 | 300      | 335      | 180      | M 308x3   | 180    | 155     | 95      | 65,50       | HK GKG PM 300 180 |