

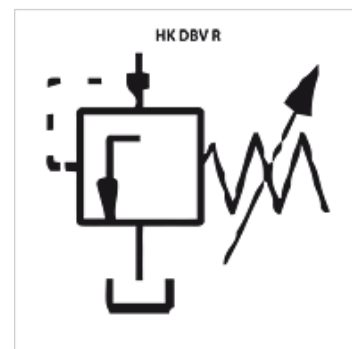
# HK DBV R

## Pressure relief valve 700 bar

### Properties

**Operating pressure** max. 700 bar

**Volumetric flow** max. 40 l/min



### Note

These valves must be set according to the application.

### Item

Identification	Thread	Q max. (L/min)	Weight (kg)
HK DBV 4 R	G 3/8"	12	0,3
HK DBV 5 R	G 1/2"	20	0,4
HK DBV 6 R	G 3/4"	40	0,7

### Accessories

NY 2100	Thermoplastic extreme pressure hose
GKS	Rubber antikink protection
PNY 2100 HN	Swage nipple, AGN
PHY 2100	Swage ferrule, NY 2100
SKL HN SP	Screwed coupling, loose half
SKL ZUBS SP	Dust protection for SKL...SP
SKF IN SP	Screwed coupling fixed half
SKF ZUBS SP	Dust protection for SKF...SP