

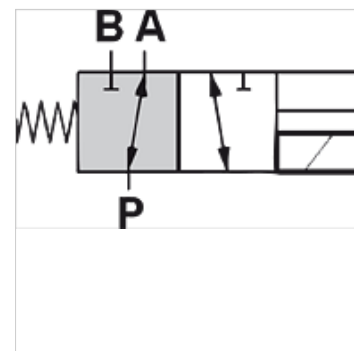
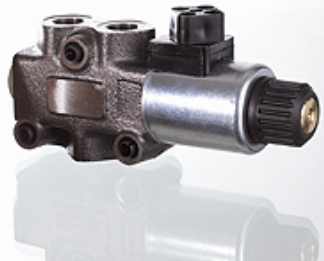
# HK DFE 3

3/2-way directional solenoid valve for pipeline installation

**HANSA FLEX**

## Properties

<b>Design</b>	with manual emergency operation NBR seals
<b>Scope of supply</b>	with coil, without plug
<b>Operating pressure</b>	max. 315 bar with leak oil port / max. 200 bar without leak oil port



## Description

These directional control valves are for switching over the oil flow  
Solenoid coil IP66

## Ordering information

Other control voltages available on request

Item										
Identification	Q max. (L/min)	Control volt- age	A (mm)	Connection A- B-P	Leak oil connec- tion	B (mm)	C (mm)	D (mm)	Design	Weight (kg)
HK DFE 052 3AW 12DC	60	12 VDC	166,0	G 3/8"	-	42,0	80,0	68,0	without oil return port	1,6
HK DFE 052 3AW 24DC	60	24 VDC	166,0	G 3/8"	-	42,0	80,0	68,0	without oil return port	1,6
HK DFE 052 3AY 12DC	60	12 VDC	166,0	G 3/8"	G 1/4"	42,0	80,0	68,0	with side-mounted leak oil port	1,6
HK DFE 052 3AY 24DC	60	24 VDC	166,0	G 3/8"	G 1/4"	42,0	80,0	68,0	with side-mounted leak oil port	1,6
HK DFE 100 3AW 12DC	90	12 VDC	213,5	G 1/2"	-	46,5	121,0	74,0	without oil return port	2,9
HK DFE 100 3AW 24DC	90	24 VDC	213,5	G 1/2"	-	46,5	121,0	74,0	without oil return port	2,9
HK DFE 100 3AY 12DC	90	12 VDC	213,5	G 1/2"	G 1/4"	46,5	121,0	74,0	with side-mounted leak oil port	2,9
HK DFE 100 3AY 24DC	90	24 VDC	213,5	G 1/2"	G 1/4"	46,5	121,0	74,0	with side-mounted leak oil port	2,9
HK DFE 200 3AW 12DC	140	12 VDC	226,0	G 3/4"	-	65,0	107,0	85,0	without oil return port	4,2
HK DFE 200 3AW 24DC	140	24 VDC	226,0	G 3/4"	-	65,0	107,0	85,0	without oil return port	4,2
HK DFE 200 3AY 12DC	140	12 VDC	226,0	G 3/4"	G 1/4"	65,0	107,0	85,0	with side-mounted leak oil port	4,2
HK DFE 200 3AY 24DC	140	24 VDC	226,0	G 3/4"	G 1/4"	65,0	107,0	85,0	with side-mounted leak oil port	4,2

Qmax - max intake volumetric flow

## Accessories

HK SP DIN 43650 Electrical plug for solenoid coil DIN 43650 / ISO 4400

## Spare parts

HK SP DFE Coil for solenoid-operated directional control valve HK DFE