

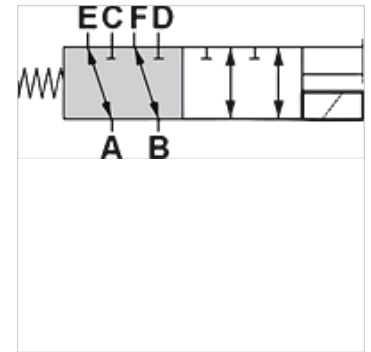
HK DFE 6

6/2-way directional solenoid valve for pipeline installation

HANSA FLEX

Properties

Design	with manual emergency operation NBR seals
Scope of supply	with coil, without plug
Operating pressure	max. 315 bar with leak oil port / max. 200 bar without leak oil port



Description

These directional control valves (valve switches) can be used optionally for supplying two hydraulic circuits.
Solenoid coil IP66

Ordering information

Other control voltages available on request

Item

Identification	Q max. (L/min)	Control voltage	A (mm)	Connection A - F	Leak oil connection	B (mm)	C (mm)	D (mm)	Design	Weight (kg)
HK DFE 052 6AW 12DC	60	12 VDC	181,0	G 3/8"	-	76,0	80,0	55,0	without oil return port	1,9
HK DFE 052 6AW 24DC	60	24 VDC	181,0	G 3/8"	-	76,0	80,0	55,0	without oil return port	1,9
HK DFE 052 6AY 12DC	60	12 VDC	181,0	G 3/8"	G 1/4"	76,0	80,0	55,0	with side-mounted leak oil port	1,9
HK DFE 052 6AY 24DC	60	24 VDC	181,0	G 3/8"	G 1/4"	76,0	80,0	55,0	with side-mounted leak oil port	1,9
HK DFE 100 6AW 12DC	90	12 VDC	241,0	G 1/2"	-	89,0	121,0	62,0	without oil return port	3,7
HK DFE 100 6AW 24DC	90	24 VDC	241,0	G 1/2"	-	89,0	121,0	62,0	without oil return port	3,7
HK DFE 100 6AY 12DC	90	12 VDC	241,0	G 1/2"	G 1/4"	89,0	121,0	62,0	with side-mounted leak oil port	3,7
HK DFE 100 6AY 24DC	90	24 VDC	241,0	G 1/2"	G 1/4"	89,0	121,0	62,0	with side-mounted leak oil port	3,7
HK DFE 200 6AW 12DC	140	12 VDC	262,0	G 3/4"	-	105,0	107,0	75,0	without oil return port	5,3
HK DFE 200 6AW 24DC	140	24 VDC	262,0	G 3/4"	-	105,0	107,0	75,0	without oil return port	5,3
HK DFE 200 6AY 12DC	140	12 VDC	262,0	G 3/4"	G 1/4"	105,0	107,0	75,0	with side-mounted leak oil port	5,3
HK DFE 200 6AY 24DC	140	24 VDC	262,0	G 3/4"	G 1/4"	105,0	107,0	75,0	with side-mounted leak oil port	5,3

Qmax - max intake volumetric flow

Accessories

HK SP DIN 43650 Electrical plug for solenoid coil DIN 43650 / ISO 4400

Spare parts

HK SP DFE Coil for solenoid-operated directional control valve HK DFE